



ASSEMBLY INSTRUCTIONS

TABLE OF CONTENTS

Assembly Diagrams for the following products can be found on the page number listed next to product name.

• Installation/Operational Safety 4

PLATFORM ASSEMBLY DIAGRAMS AND ATTACHMENT OPTIONS

• Retreat Assembly 5

• Retreat Attachment Options 6-8

• Retreat 2 Assembly 9

• Retreat 2 Attachment Options 10-12

• Harbor Assembly 13

• Harbor Attachment Options 14-16

• Harbor 2 Assembly 17

• Harbor 2 Attachment Options 18-20

• Harbor 3 Assembly 21

• Harbor 3 Attachment Options 22-24

• Hideaway Assembly 25

• Hideaway Attachment Options 26-28

• Winch Kit 29

• Solar Hybrid Pump Installation 32

• Standard Pipe Bunk Installation 33

• Maintenance/Troubleshooting 34

• Warranty/Limitations 35

COMPONENT DIAGRAMS, DESCRIPTIONS AND KITS

• Air Tank 30

• Bow Guide 30

• Bunk Fill 30

• Connector Link 30

• Corner Piece 30

• Harbor Center Roller 30

• Hideaway Decorative Plug 30

• Hideaway Side Plug 30

• Jet-T Plug 30

• Pipe Bunk 30

• Retreat 2 Center Roller 30

• Structure Plug 30

• Solar Hybrid Pump 30

• Adjustable Pile Side Attachment 31

• Harbor Double Attachment 31

• Floating Dock Attachment Arm 31

• HDG Attachment Kit 31

• PVC Attachment Kit 31

• Pile Mount Attachment 31

• Retreat 2 Double Attachment 31

• Timber Corner Attachment 31

• Timber Link Attachment 31

TOOLS NEEDED

Assembly of most products will require one or more of the following tools.

- Deep Well & 9/16 Socket
- Wrench
- Power Drill & Bits
- Pliers
- Phillips Head Screw Driver
- Anti-Seize™
- Ratchet
- 9/16 Wrench
- 1/4" Rope or larger
- Utility Knife
- Rubber Mallet

BEFORE YOU BEGIN

Remember: Assembly of most products are site specific.

Before You Start - Please Read

The Safe Haven system is design to be very easy to assemble and install. However, all boatlift installations are custom to varying degrees. There are a few issues to consider before you can begin the assembly of your Safe Haven Boatlift.

Review the area around your dock and determine the best location to place your PWC lift or boatlift. Consider the water conditions: water depth, wave action, fluctuation, currents, and tides. Also, do you have a fixed pier or a floating dock? These answers will determine if you front or side mount your boatlift, as well as which attachment method should be used.

Before you begin, determine where your attachments connect to your platform. All attachments will replace another Safe Haven part. Therefore, locations of connector links, structure plugs and corner mounts will change for different platform configurations. Inspect your boatlift to see which parts are already assembled. Determine the location of the bow guide. Be sure all Retreat center roller or Harbor center roller assemblies are installed before you connect units using connector links and structure plugs.

If you have any questions regarding installation please contact us via email or phone for assistance.
Call 1-877-SFHAVEN (734-2836) or email us at info@safehavenboatlifts.com.

INSTALLATION SAFETY

Use extreme caution near and on the water while installing your platform. Read the instructions thoroughly before beginning. The weight of our platforms can vary from 100 to 300 hundred pounds. You may need additional help. While working on your dock or Safe Haven platform be aware of the location of tools to prevent tripping and falling accidents.

When placing the platforms in the water use care not to damage the unit itself. If you must flip a unit have enough help to balance the Platforms to prevent falls. You may find it easier to launch your platform from a boat trailer at a ramp if one is near. These decisions must be made on-site by the individual installing the platform.

OPERATIONAL SAFETY

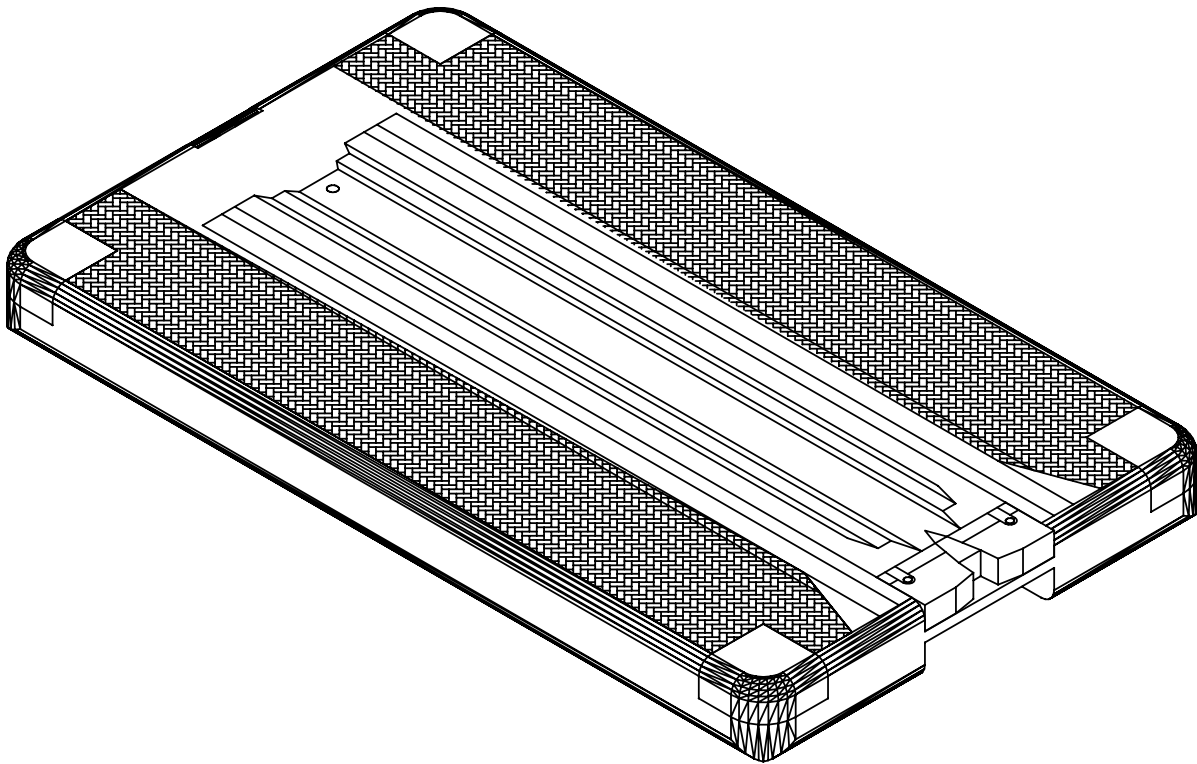
- **When docking, approach the Safe Haven Boatlift at no more than 1 MPH.** Touch the yellow bow guide with the bow of your boat. Once you are centered drive onto the boatlift. If you are not centered then back off the platform and make another approach.
- **After driving on the Boatlift put the boat into neutral.** If you have not driven far enough onto the boatlift you may slide backwards into the water. Be sure you have driven all the way onto the boatlift before disembarking from your boat. Make fast your boat to your floating or fixed dock.
- **Beware of trip hazards** when walking on the Safe Haven Boatlift. Pipe Bunks and Keel Rollers can produce trips hazards.
- **Be careful not to slip** if you use petroleum based products to reduce friction.

If you have any questions regarding installation please contact us via email or phone for assistance.
Call 1-877-SFHAVEN (734-2836) or email us at info@safehavenboatlifts.com.

RETREAT PLATFORM

ATTACHMENT OPTIONS

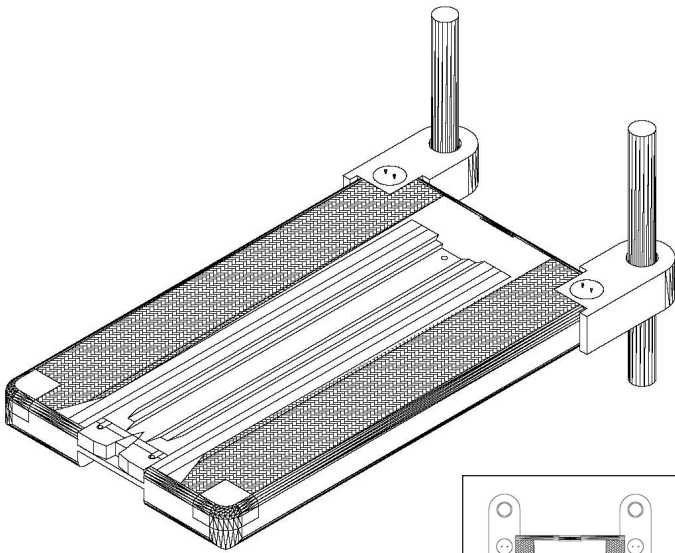
- **Pile Attachment:** Side Mount & Front Mount
- **Floating Dock:** Side Mount & Front Mount
- **Timber Mount:** Side Mount & Front Mount



If you have any questions regarding installation please contact us via email or phone for assistance.
Call 1-877-SFHAVEN (734-2836) or email us at info@safehavenboatlifts.com.

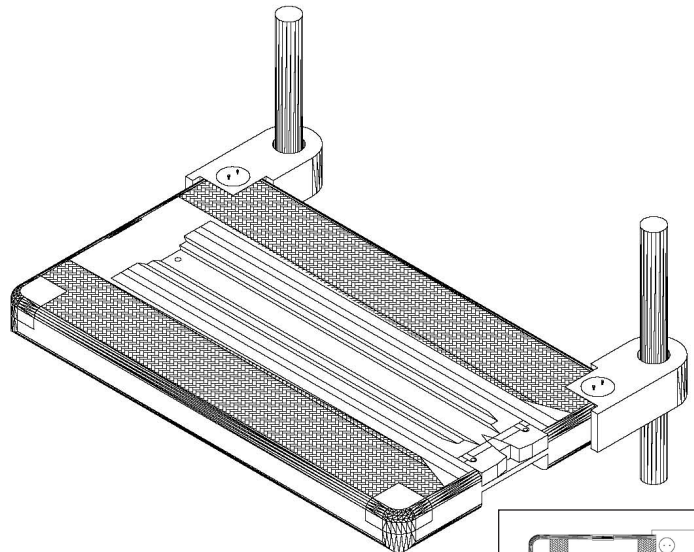
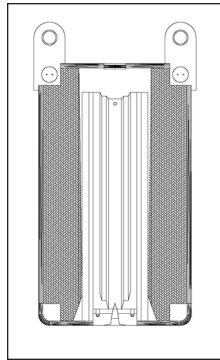
RETREAT ATTACHMENTS

PILE ATTACHMENT



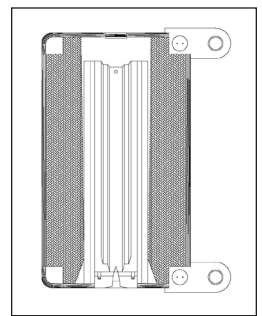
FRONT FIXED POSITION

REQUIRED PARTS:
1 Pile Attachment Kit



SIDE FIXED POSITION

REQUIRED PARTS:
1 Pile Attachment Kit



GUIDELINES:

Pile Attachment Kits:

- Attachment connects to platform with structure plug.
- 12" inside dimension.
- Piles should not be larger than a 10" diameter.
- Attachments must go over the top of piles.
- Pile centers must be exact.

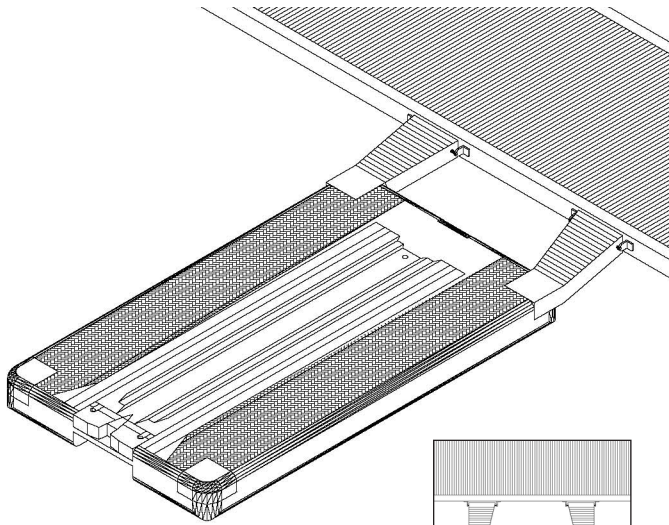
Adjustable Pile Attachment Kits for Side Mount:

- Attachment connects to platform with structure plug.
- Attachment allows for 8" side to side adjustment.
- Pile centers must be exact.

If you have any questions regarding installation please contact us via email or phone for assistance.
Call 1-877-SFHAVEN (734-2836) or email us at info@safehavenboatlifts.com.

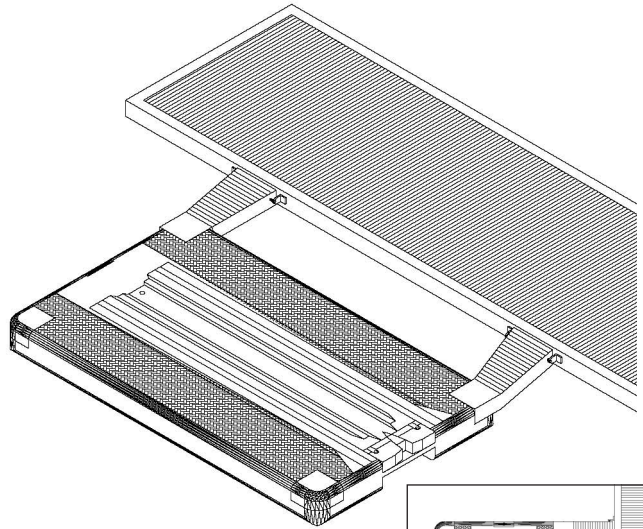
RETREAT ATTACHMENTS

FLOATING DOCK MOUNT



FRONT FLOATING POSITION

REQUIRED PARTS:
1 Floating Dock
Attachment Kit



SIDE FLOATING POSITION

REQUIRED PARTS:
1 Floating Dock
Attachment Kit

GUIDELINES:

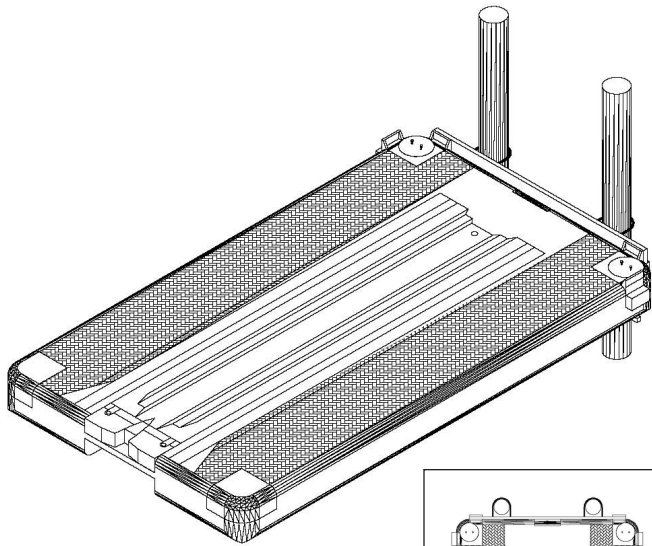
Floating Dock Attachment Kits:

- Mount HDG brackets 12" above water to allow for maximum stroke.
- Attach with 1/2" lags or through bolts.
- Secure with PVC pipes and plastic ties.

If you have any questions regarding installation please contact us via email or phone for assistance.
Call 1-877-SFHAVEN (734-2836) or email us at info@safehavenboatlifts.com.

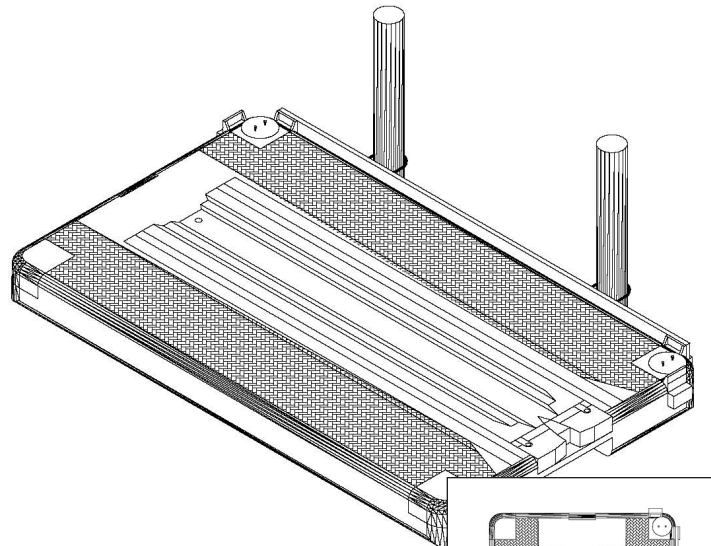
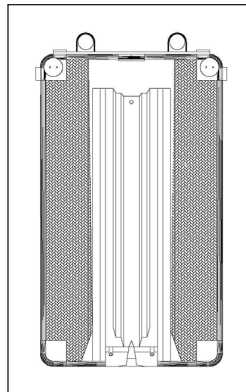
RETREAT ATTACHMENTS

TIMBER MOUNT Attachment for Fixed Docks



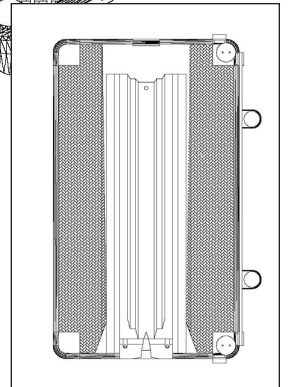
FRONT TIMBER MOUNT

REQUIRED PARTS:
2 Timber Corners



SIDE TIMBER MOUNT

REQUIRED PARTS:
2 Timber Corners



GUIDELINES:

Timber Mount Attachment for Front & Side Mount:

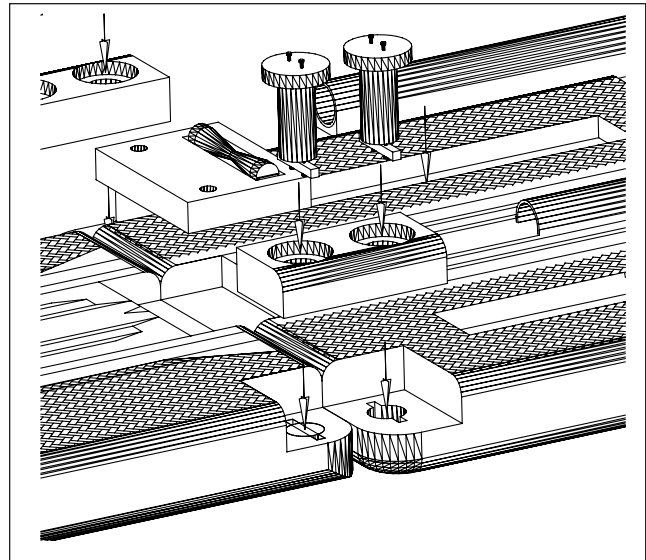
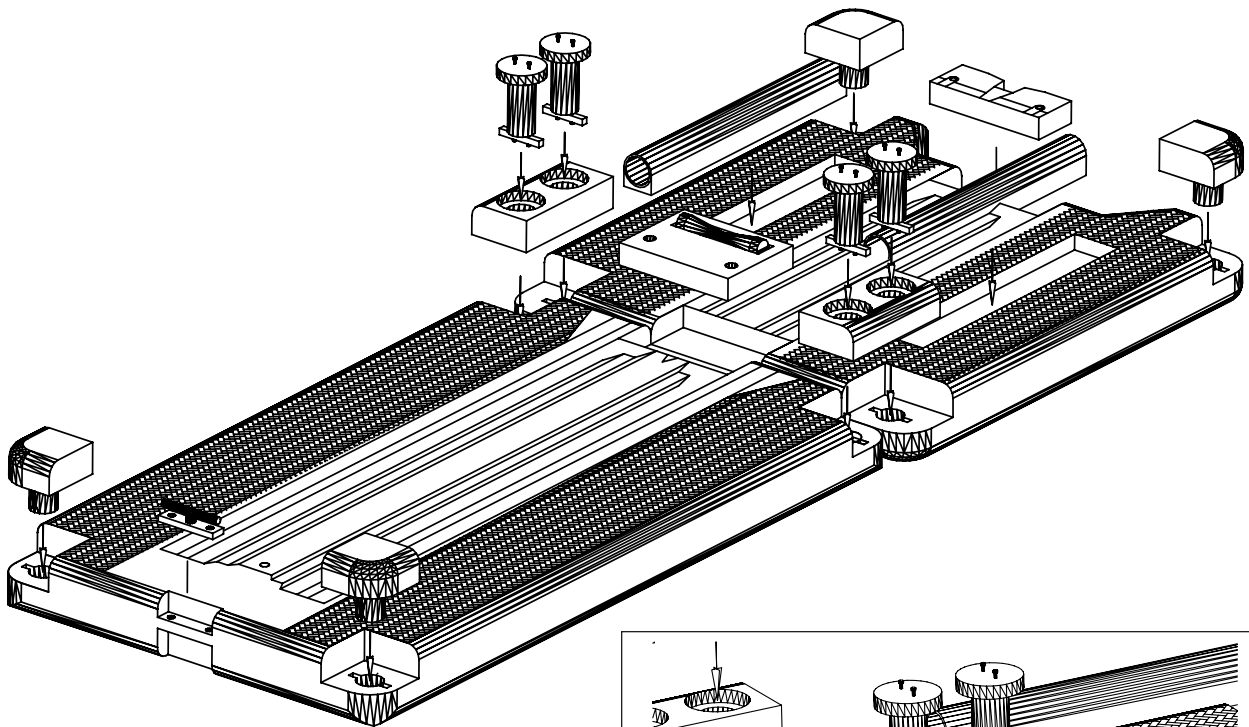
- Use 3" wide treated timbers or larger.
- Secure with 1/2" through bolts. (Hardware not included.)
- Timber should not extend more than 3' from edge of platform.
- Mount U-bolts along timber to connect to existing piles. (U-hoops not included.)
- Front Mount will limit boat or PWC size.
- Two or more piles required for attachment. 5' or more apart.

If you have any questions regarding installation please contact us via email or phone for assistance.
Call 1-877-SFHAVEN (734-2836) or email us at info@safehavenboatlifts.com.

RETREAT 2 ASSEMBLY

ATTACHMENT OPTIONS

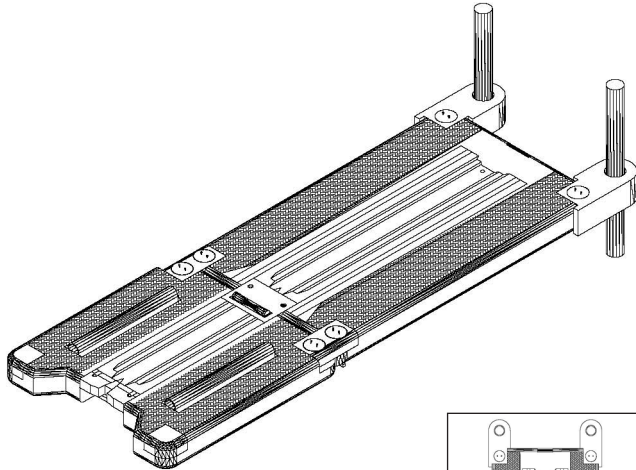
- **Pile Attachment:** Side Mount & Front Mount
- **Floating Dock:** Side Mount & Front Mount
- **Timber Mount:** Side Mount & Front Mount



If you have any questions regarding installation please contact us via email or phone for assistance.
Call 1-877-SFHAVEN (734-2836) or email us at info@safehavenboatlifts.com.

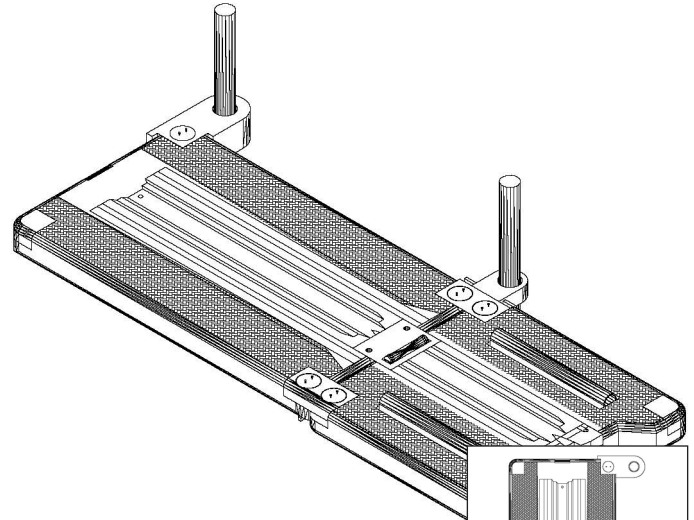
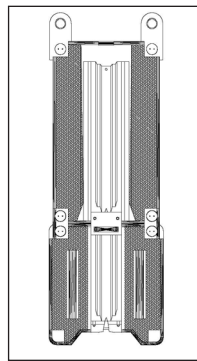
RETREAT 2 ATTACHMENTS

PILE ATTACHMENT



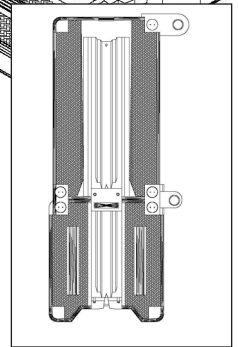
FRONT FIXED POSITION

REQUIRED PARTS:
1 Pile Attachment Kit



SIDE FIXED POSITION

REQUIRED PARTS:
1 Pile Attachment Arm and
1 Adjustable Pile Attachment



GUIDELINES:

Pile Attachment Kits:

- 12" inside dimension.
- Piles should not be larger than a 10" diameter.
- Pile centers must be exact.
- Attachments must go over the top of piles.

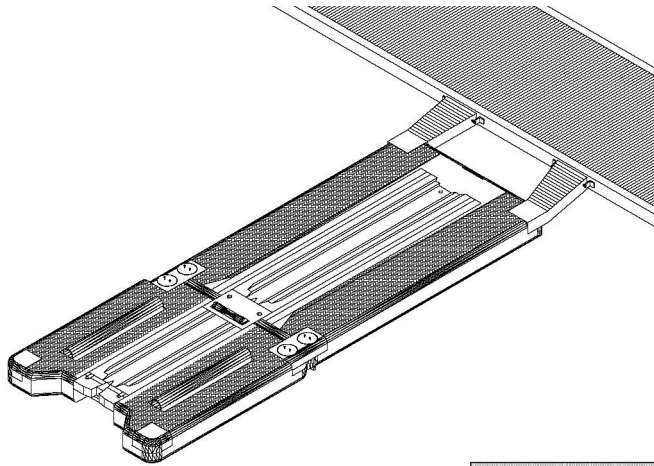
Adjustable Pile Attachment Kits for Side Mount:

- Attachment allows for 8" adjustment.
- Pile centers must be exact.

If you have any questions regarding installation please contact us via email or phone for assistance.
Call 1-877-SFHAVEN (734-2836) or email us at info@safehavenboatlifts.com.

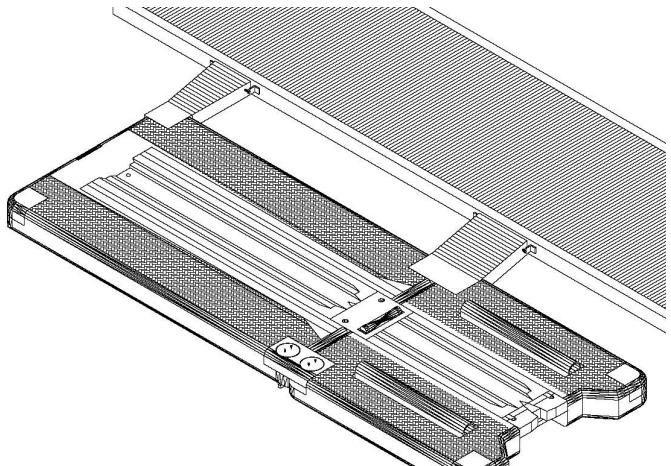
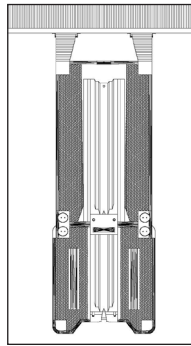
RETREAT 2 ATTACHMENTS

FLOATING DOCK MOUNT



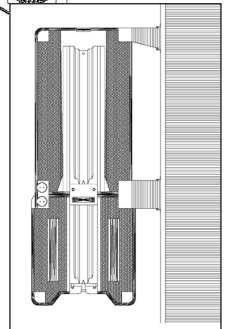
FRONT FLOATING POSITION

REQUIRED PARTS:
1 Floating Dock Attachment Kit



SIDE FLOATING POSITION

REQUIRED PARTS:
1 Floating Dock Attachment Kit



GUIDELINES:

Floating Dock Attachment Kits:

- Mount HDG brackets 12" above water to allow for maximum stroke.
- Attach with 1/2" lags or through bolts.
- Secure with PVC pipes and plastic ties.
- Do not use rear attachment points.

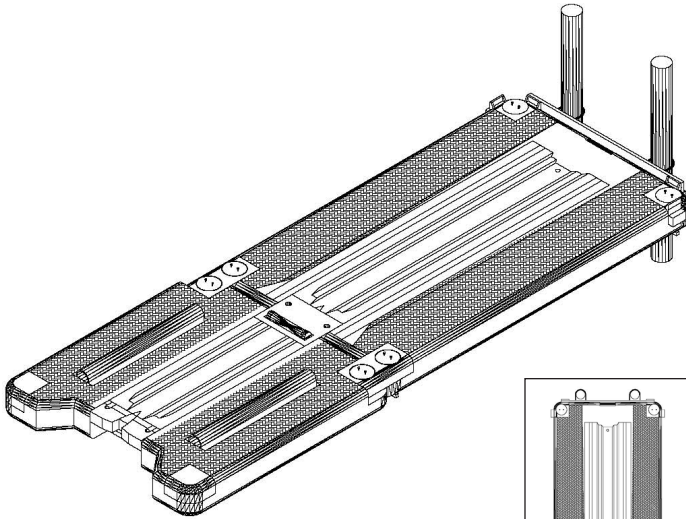
Retreat 2 Double Attachment for Side Mount:

- Mount HDG brackets 12" above water to allow for maximum stroke.
- Attach with 12" lags or through bolts.
- Secure with PVC pipes and plastic ties.

If you have any questions regarding installation please contact us via email or phone for assistance.
Call 1-877-SFHAVEN (734-2836) or email us at info@safehavenboatlifts.com.

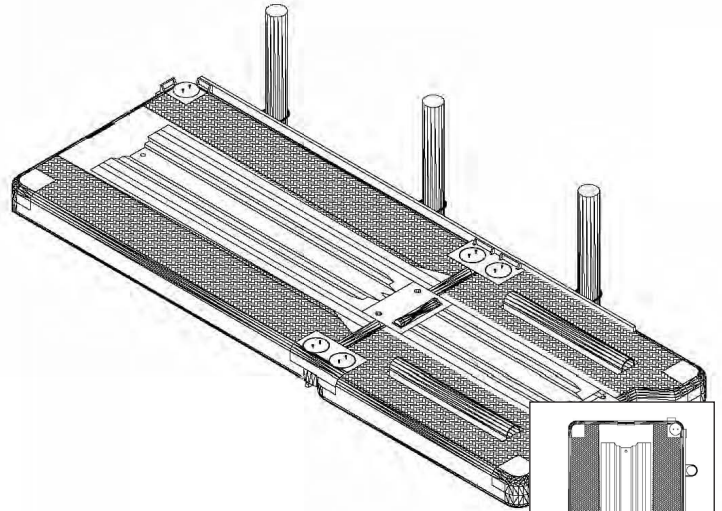
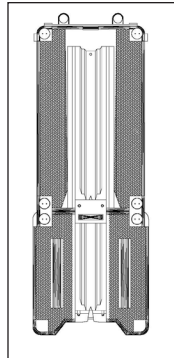
RETREAT 2 ATTACHMENTS

TIMBER MOUNT Attachment for Fixed Docks



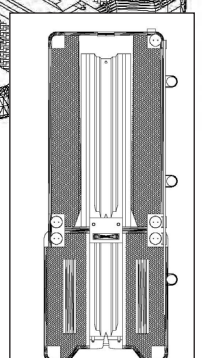
FRONT TIMBER MOUNT

REQUIRED PARTS:
2 Timber Corners



SIDE TIMBER MOUNT

REQUIRED PARTS:
2 Timber Corners and 1 Timber
Connector Link



GUIDELINES:

Special Note for Side Mount: Each platform will have a timber mount from the timber corner extending to half of the 1st connector link, then to the timber corner. There should be a small gap between each timber to allow the platform to move with the water.

Timber Mount Attachment for Front & Side Mount:

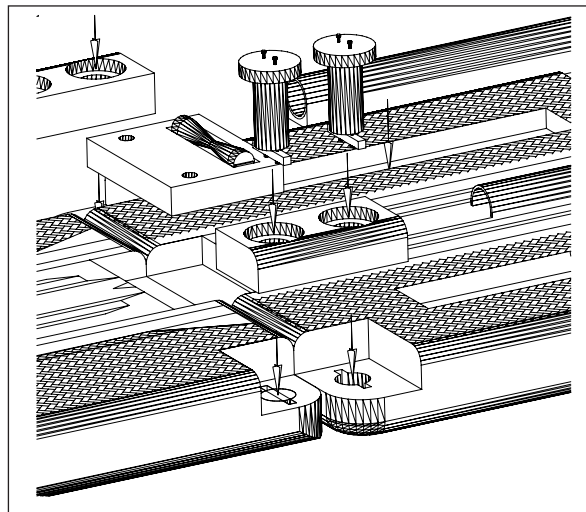
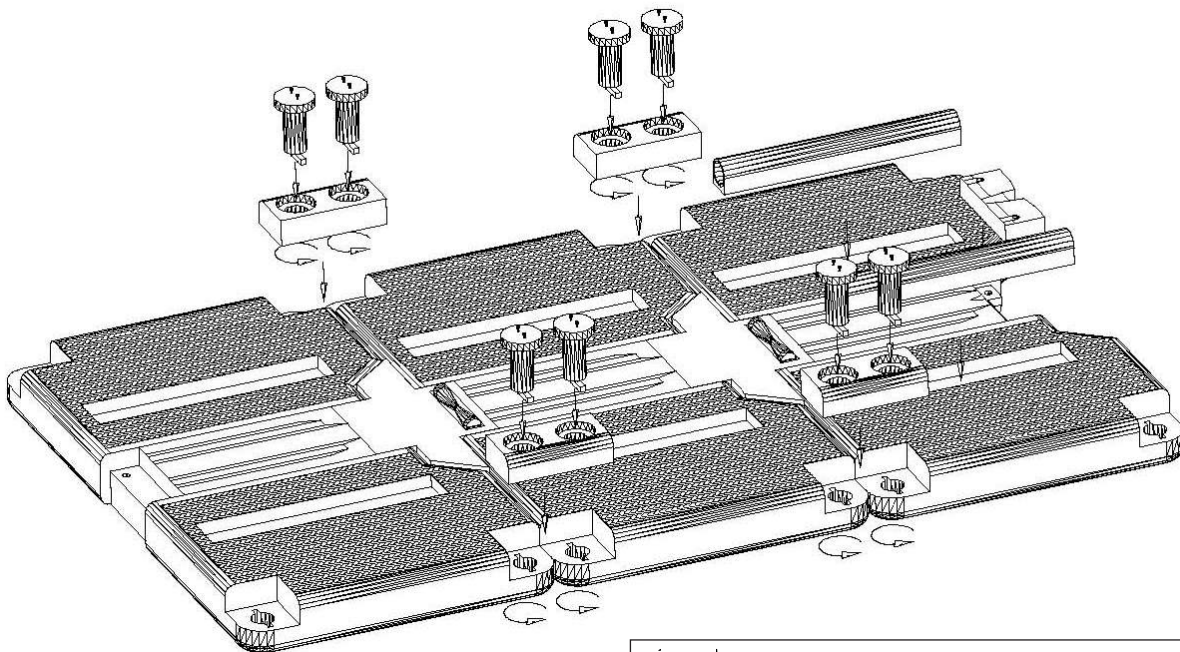
- Use 3" wide treated timbers or larger.
- Secure with 1/2" through bolts. (Hardware not included.)
- Timber should not extend more than 3' from edge of platform.
- Mount U-bolts along timber to connect to existing piles. (U-hoops not included.)
- Front Mount will limit boat or PWC size.
- Two or more piles required for attachment. 10' or more apart.

If you have any questions regarding installation please contact us via email or phone for assistance.
Call 1-877-SFHAVEN (734-2836) or email us at info@safehavenboatlifts.com.

HARBOR ASSEMBLY

ATTACHMENT OPTIONS

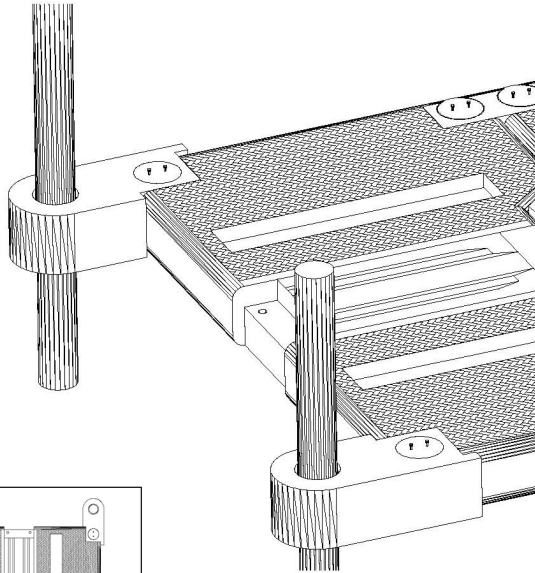
- Pile Attachment: Side Mount & Front Mount
- Floating Dock: Side Mount & Front Mount
- Timber Mount: Side Mount & Front Mount
- Harbor Double Attachment: Side ONLY



If you have any questions regarding installation please contact us via email or phone for assistance.
Call 1-877-SFHAVEN (734-2836) or email us at info@safehavenboatlifts.com.

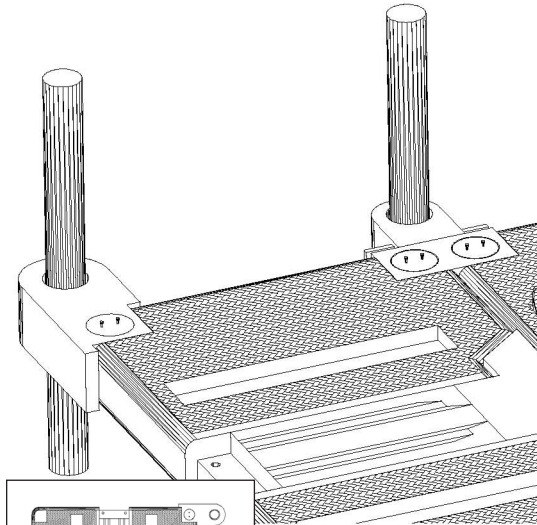
HARBOR ATTACHMENTS

PILE ATTACHMENT



FRONT FIXED POSITION

REQUIRED PARTS:
1 Pile Attachment Kit



SIDE FIXED POSITION

REQUIRED PARTS:
1 Pile Attachment Arm
2 Adjustable Pile Attachments

GUIDELINES:

Pile Attachment Kits:

- 12" inside dimension.
- Piles should not be larger than a 10" diameter.
- Pile centers must be exact.
- Attachments must go over the top of piles.

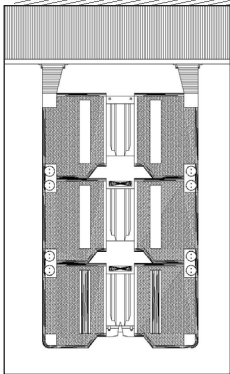
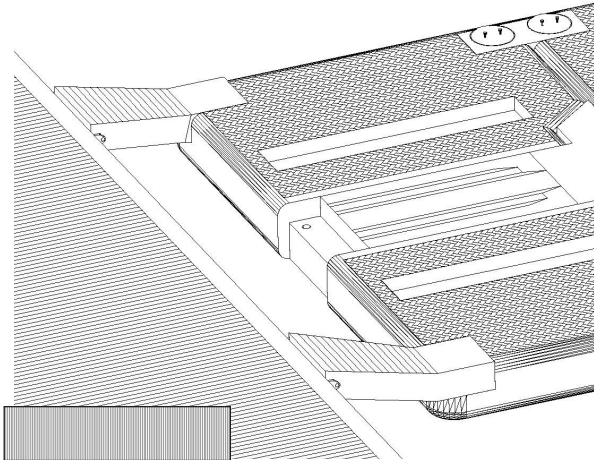
Adjustable Pile Attachment Kits for Side Mount:

- Attachment connects to platform with structure plug.
- Attachment allows for 8" side to side adjustment.
- Pile centers must be exact.

If you have any questions regarding installation please contact us via email or phone for assistance.
Call 1-877-SFHAVEN (734-2836) or email us at info@safehavenboatlifts.com.

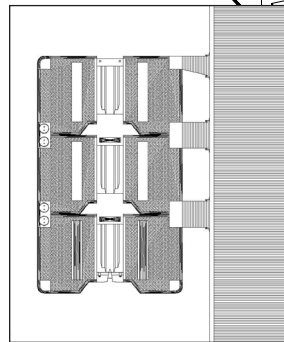
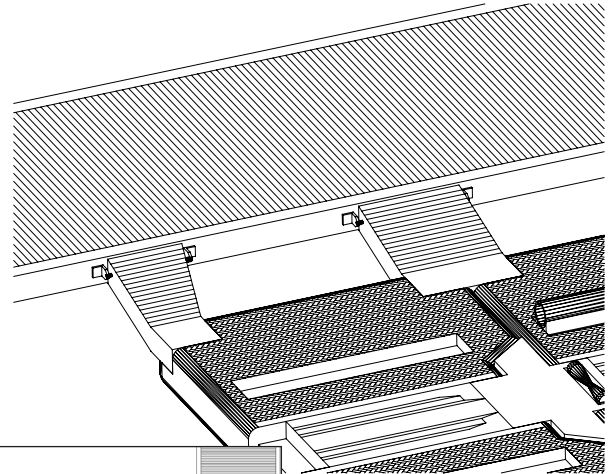
HARBOR ATTACHMENTS

FLOATING DOCK MOUNT



FRONT FLOATING POSITION

REQUIRED PARTS:
1 Floating Dock Attachment Kit



SIDE FLOATING POSITION

REQUIRED PARTS:
1 Attachment Arm
2 Harbor Side Mounts

GUIDELINES:

Floating Dock Attachment Kits:

- Mount HDG brackets 12" above water to allow for maximum stroke.
- Attach with 1/2" lags or through bolts.
- Secure with PVC pipes and plastic ties.
- Do not use rear attachment points.

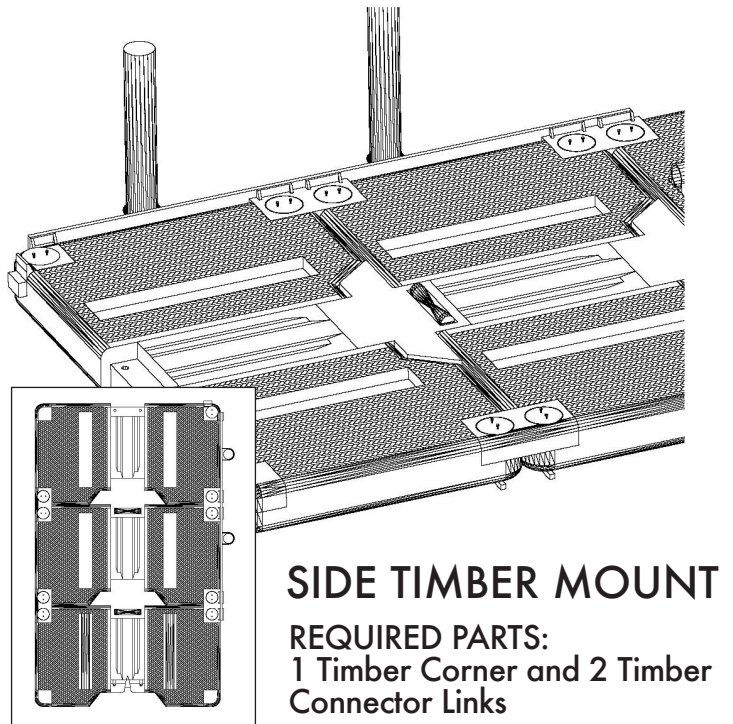
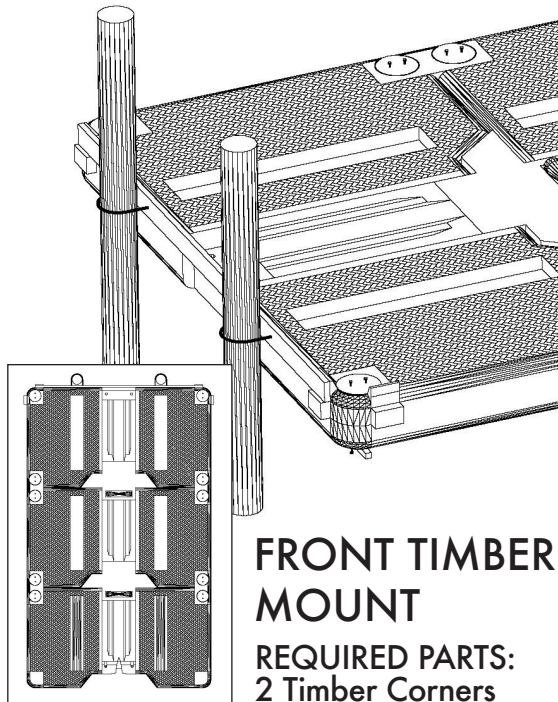
Harbor Double Attachment: (side only)

- Mount HDG brackets 16" above water to allow for maximum stroke.
- Attach with 1/2" lags or through bolts.
- Secure with PVC pipes and plastic ties.
- The attachment arm is secured by plastic sleeved aluminum pipe provided in connector base.

If you have any questions regarding installation please contact us via email or phone for assistance.
Call 1-877-SFHAVEN (734-2836) or email us at info@safehavenboatlifts.com.

HARBOR ATTACHMENTS

TIMBER MOUNT Attachment for Fixed Docks



GUIDELINES:

***Special Note for Side Mount:** Each platform will have a timber mount from the timber corner extending to half of the 1st connector link, then from the other half of the 1st connector link to half of the 2nd connector link. There should be a small gap between each timber to allow the platform to move with the water. Secure with 1/2" HGD though bolts (not included) and do not use rear attachment points.*

Timber Mount Attachment for Front & Side Mount:

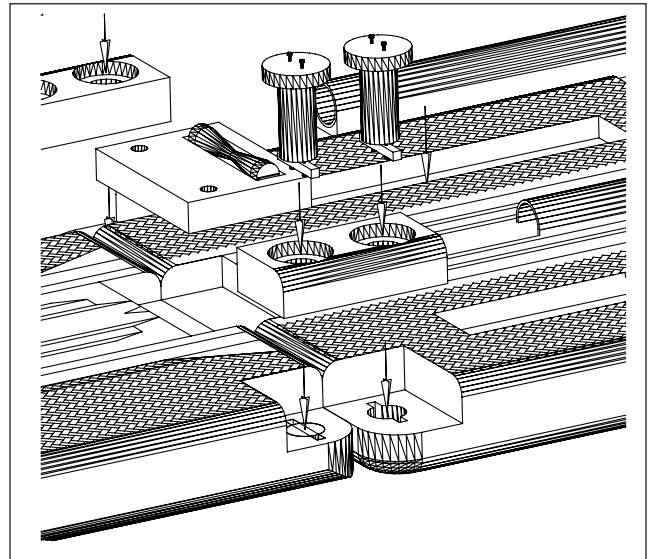
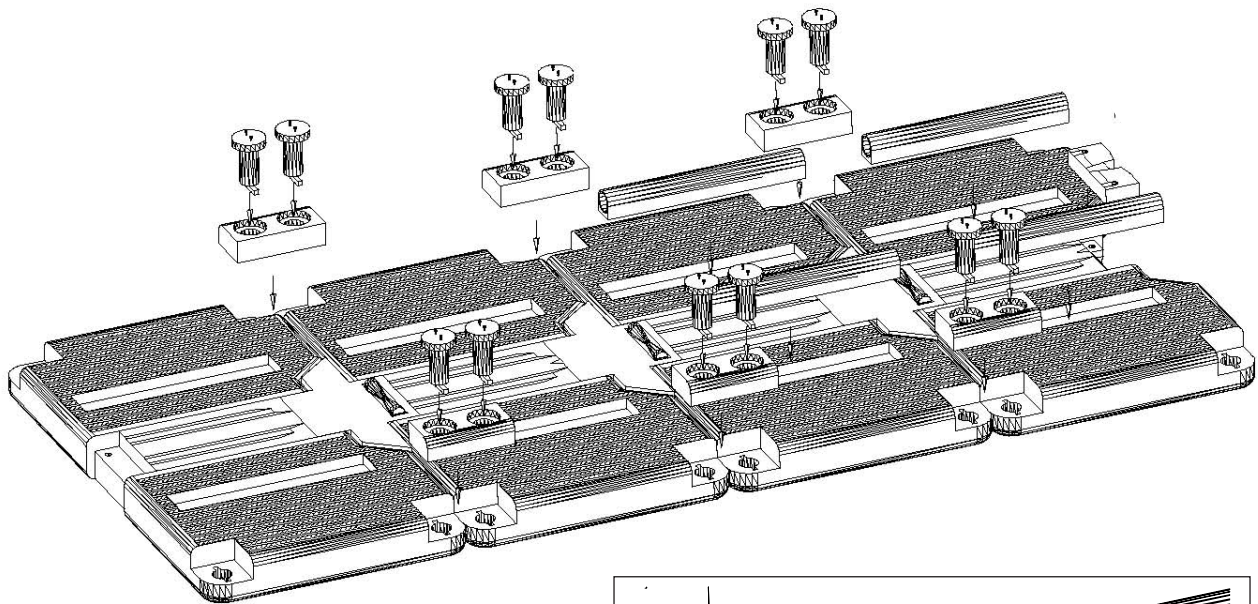
- Use 3" wide treated timbers or larger.
- Secure with 1/2" through bolts. (Hardware not included.)
- Timber should not extend more than 3" from edge of platform.
- Mount U-bolts along timber to connect to existing piles.

If you have any questions regarding installation please contact us via email or phone for assistance.
Call 1-877-SFHAVEN (734-2836) or email us at info@safehavenboatlifts.com.

HARBOR 2 ASSEMBLY

ATTACHMENT OPTIONS

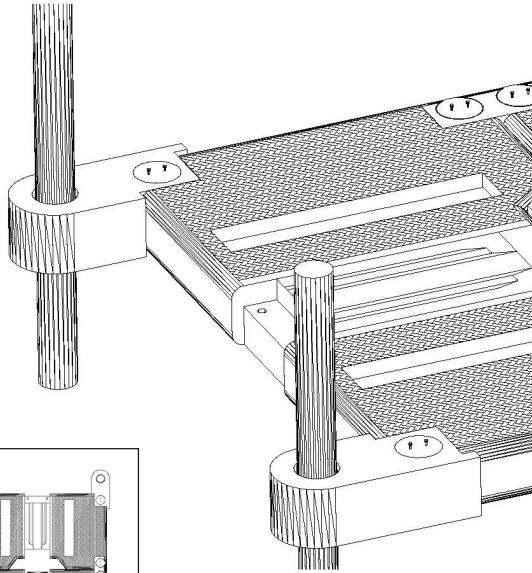
- **Pile Attachment:** Side Mount & Front Mount
- **Floating Dock:** Side Mount & Front Mount
- **Timber Mount:** Side Mount & Front Mount
- **Harbor Double Attachment:** Side ONLY



If you have any questions regarding installation please contact us via email or phone for assistance.
Call 1-877-SFHAVEN (734-2836) or email us at info@safehavenboatlifts.com.

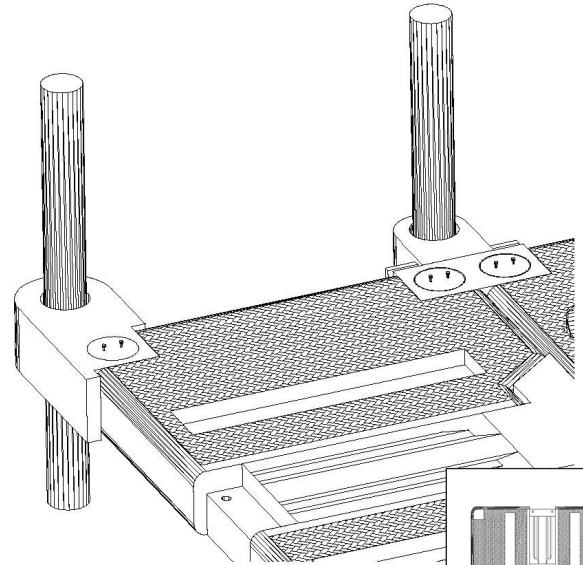
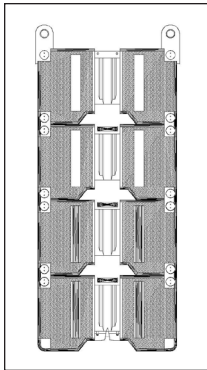
HARBOR 2 ATTACHMENTS

PILE ATTACHMENT



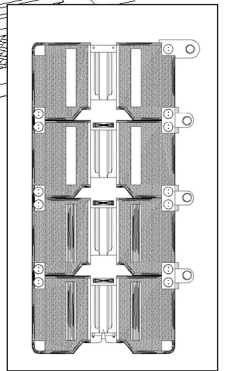
FRONT FIXED POSITION

REQUIRED PARTS:
1 Pile Attachment Kit



SIDE FIXED POSITION

REQUIRED PARTS:
1 Pile Attachment Arm
3 Adjustable Pile Attachments



GUIDELINES:

Pile Attachment Kits:

- 12" inside dimension.
- Piles should not be larger than a 10" diameter.
- Pile centers must be exact.
- Attachments must go over the top of piles.

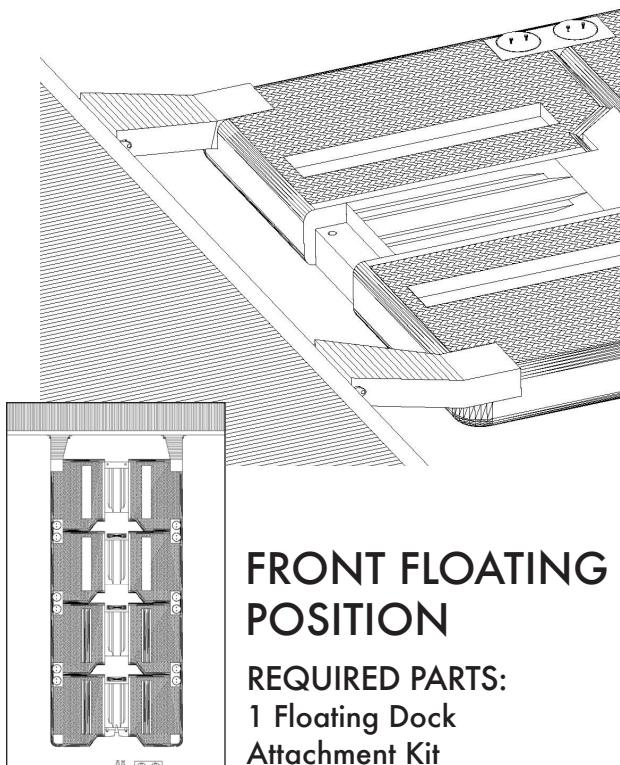
Adjustable Pile Attachment Kits for Side Mount:

- Attachment connects to platform with structure plug.
- Attachment allows for 8" side to side adjustment.
- Pile centers must be exact.

If you have any questions regarding installation please contact us via email or phone for assistance.
Call 1-877-SFHAVEN (734-2836) or email us at info@safehavenboatlifts.com.

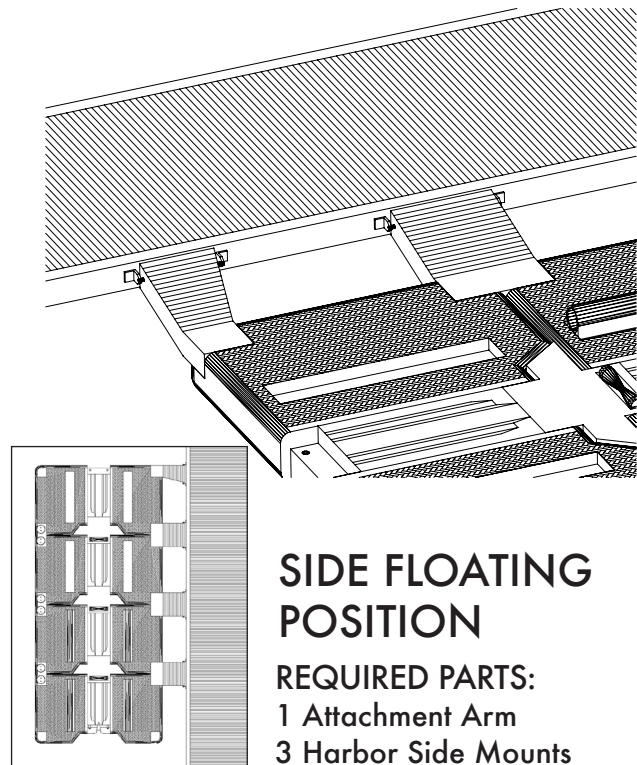
HARBOR 2 ATTACHMENTS

FLOATING DOCK MOUNT



FRONT FLOATING POSITION

REQUIRED PARTS:
1 Floating Dock
Attachment Kit



SIDE FLOATING POSITION

REQUIRED PARTS:
1 Attachment Arm
3 Harbor Side Mounts

GUIDELINES:

Floating Dock Attachment Kits:

- Mount HDG brackets 12" above water to allow for maximum stroke.
- Attach with 1/2" lags or through bolts.
- Secure with PVC pipes and plastic ties.
- Do not use rear attachment points.

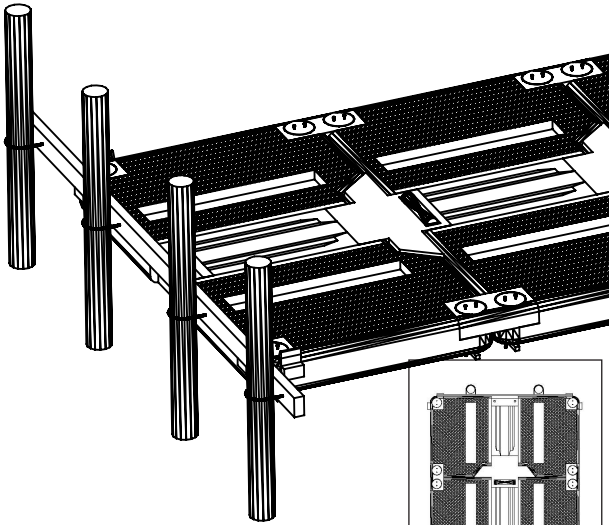
Harbor Double Attachment for Side Mount:

- Mount HDG brackets 16" above water to allow for maximum stroke.
- Attach with 1/2" lags or through bolts.
- Secure with PVC pipes and plastic ties.
- The attachment arm is secured by plastic sleeved aluminum pipe provided in connector base.

If you have any questions regarding installation please contact us via email or phone for assistance.
Call 1-877-SFHAVEN (734-2836) or email us at info@safehavenboatlifts.com.

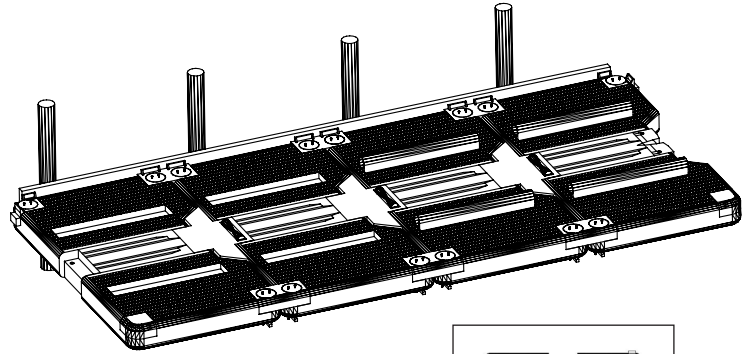
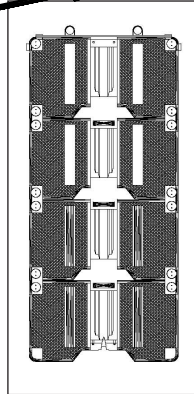
HARBOR 2 ATTACHMENTS

TIMBER MOUNT Attachment for Fixed Docks



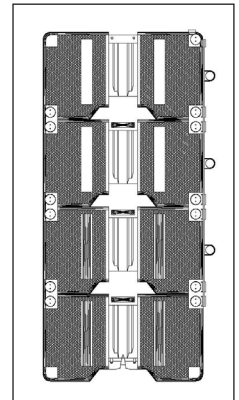
FRONT TIMBER MOUNT

REQUIRED PARTS:
2 Timber Corners



SIDE TIMBER MOUNT

REQUIRED PARTS:
1 Timber Corner
3 Timber Connector Links



GUIDELINES:

Special Note for Side Mount: Each platform will have a timber mount from the timber corner extending to half of the 1st connector link, then from the other half of the 1st connector link to half of the 2nd connector link. There should be a small gap between each timber to allow the platform to move with the water. Secure with 1/2" HGD though bolts (not included) and do not use rear attachment points.

Timber Mount Attachment for Front & Side Mount:

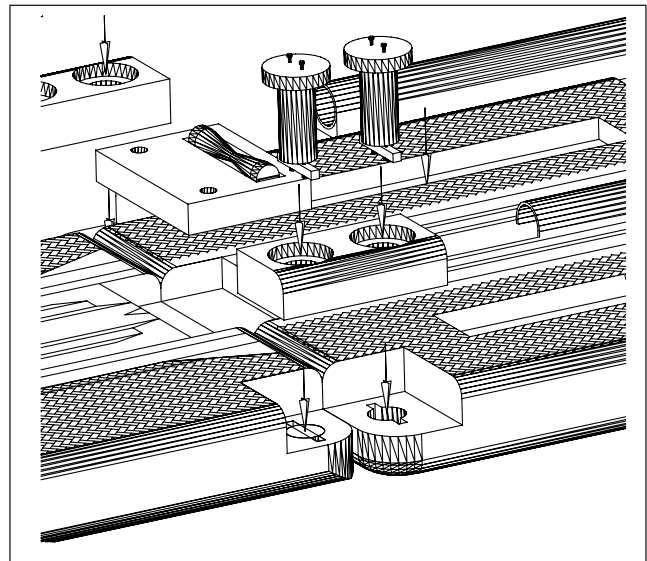
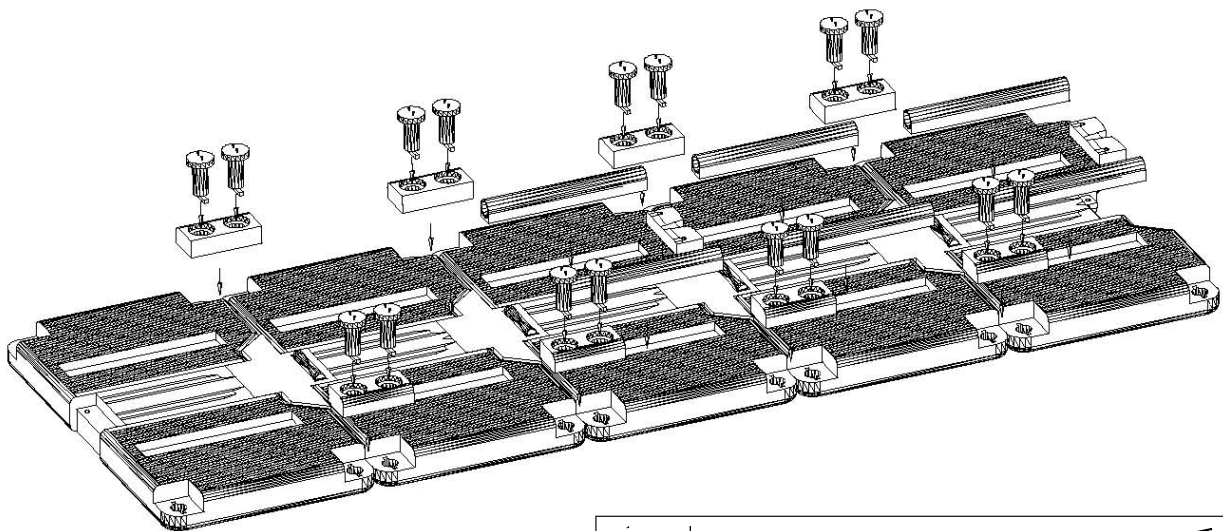
- Use 3" wide treated timbers or larger.
- Secure with 1/2" through bolts. (Hardware not included.)
- Timber should not extend more than 3" from edge of platform.
- Mount U-bolts along timber to connect to existing piles.

If you have any questions regarding installation please contact us via email or phone for assistance.
Call 1-877-SFHAVEN (734-2836) or email us at info@safehavenboatlifts.com.

HARBOR 3 ASSEMBLY

ATTACHMENT OPTIONS

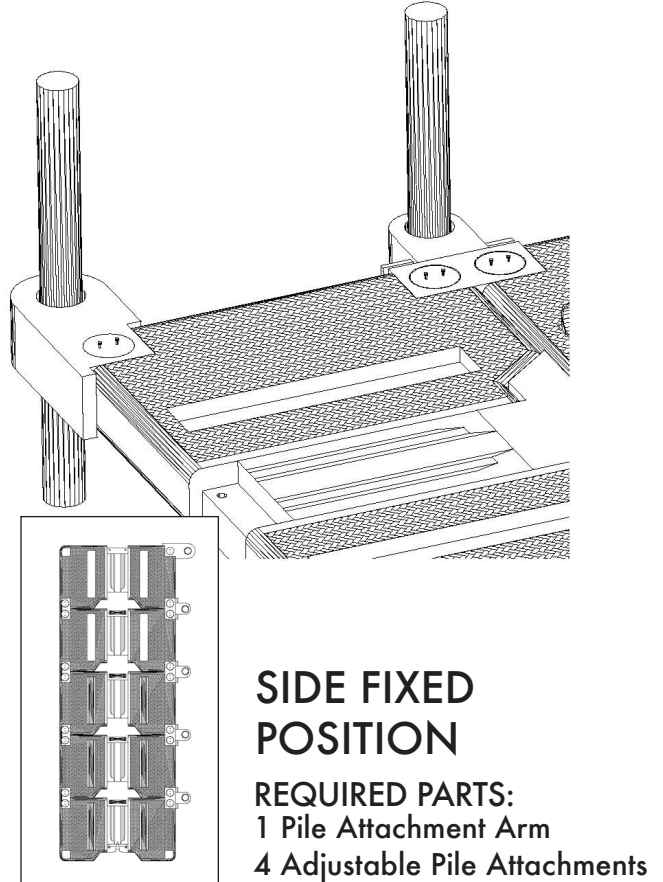
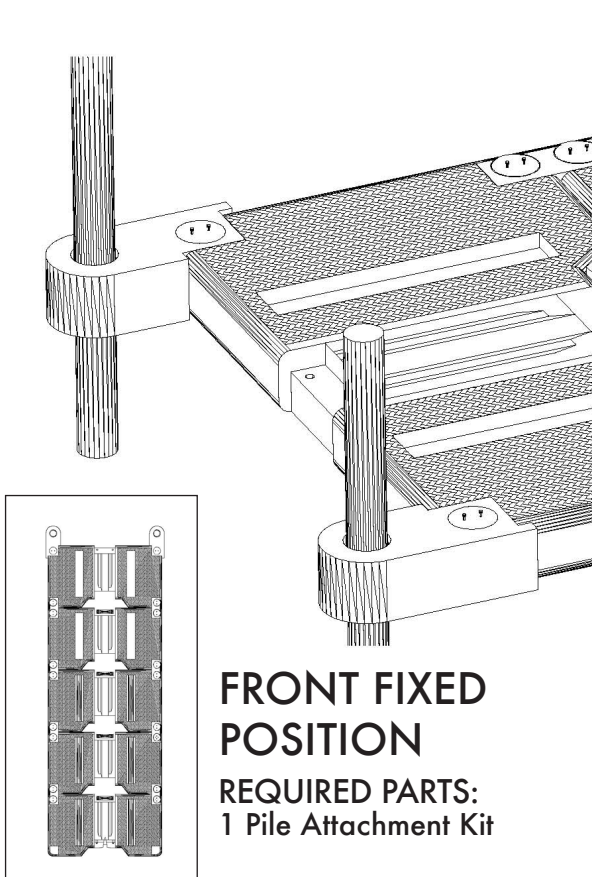
- **Pile Attachment:** Side Mount & Front Mount
- **Floating Dock:** Side Mount & Front Mount
- **Timber Mount:** Side Mount & Front Mount
- **Harbor Double Attachment:** Side ONLY



If you have any questions regarding installation please contact us via email or phone for assistance.
Call 1-877-SFHAVEN (734-2836) or email us at info@safehavenboatlifts.com.

HARBOR 3 ATTACHMENTS

PILE ATTACHMENT



GUIDELINES:

Pile Attachment Kits:

- 12" inside dimension.
- Piles should not be larger than a 10" diameter.
- Pile centers must be exact.
- Attachments must go over the top of piles.

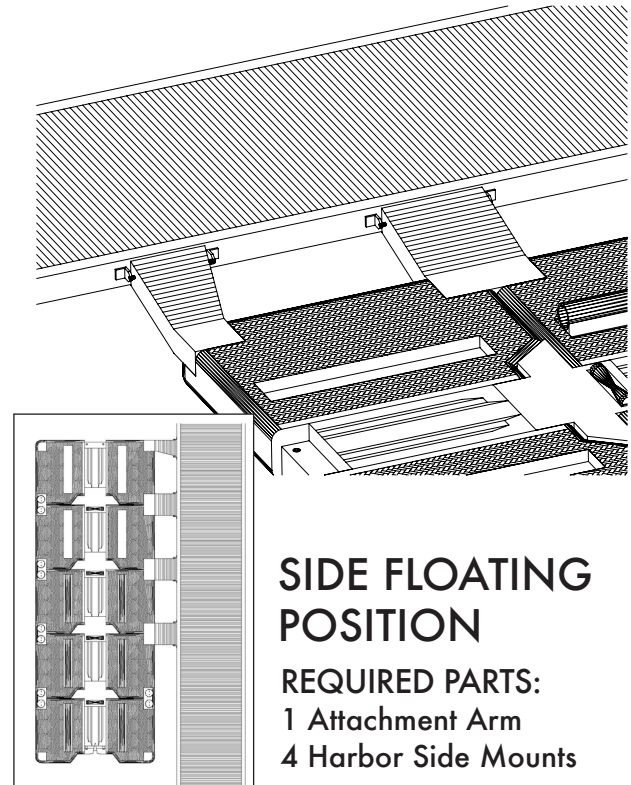
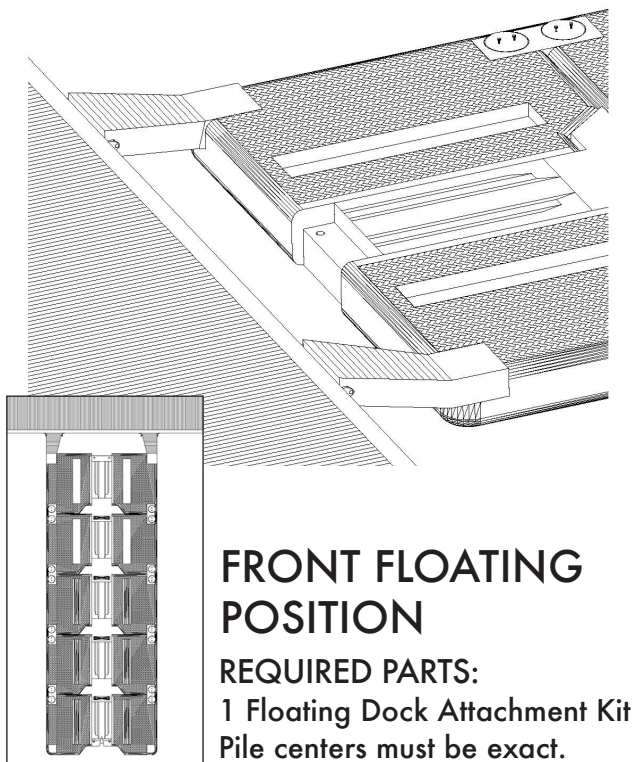
Adjustable Pile Attachment Kits for Side Mount:

- Attachment connects to platform with structure plug.
- Attachment allows for 8" side to side adjustment.
- Pile centers must be exact.

If you have any questions regarding installation please contact us via email or phone for assistance.
Call 1-877-SFHAVEN (734-2836) or email us at info@safehavenboatlifts.com.

HARBOR 3 ATTACHMENTS

FLOATING DOCK MOUNT



GUIDELINES:

Floating Dock Attachment Kits:

- Mount HDG brackets 12" above water to allow for maximum stroke.
- Attach with 1/2" lags or through bolts.
- Secure with PVC pipes and plastic ties.
- Do not use rear attachment points.

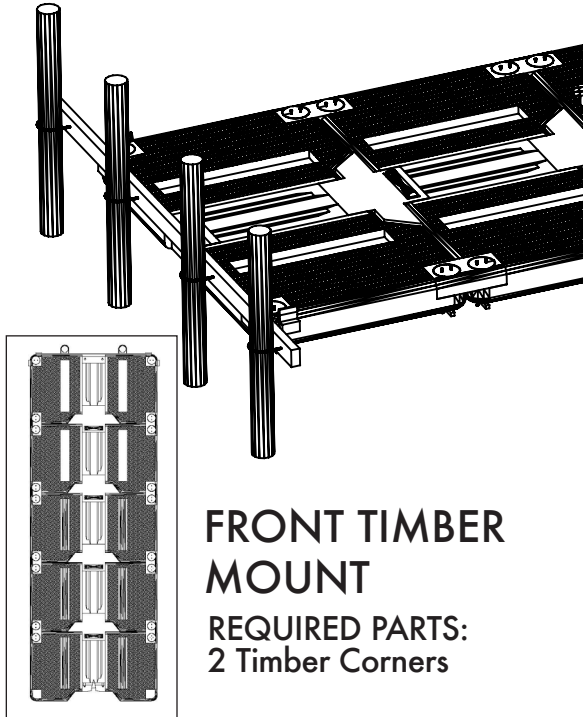
Harbor Double Attachment for Side Mount:

- Mount HDG brackets 16" above water to allow for maximum stroke.
- Attach with 1/2" lags or through bolts.
- Secure with PVC pipes and plastic ties.
- The attachment arm is secured by plastic sleeved aluminum pipe provided in connector base.

If you have any questions regarding installation please contact us via email or phone for assistance.
Call 1-877-SFHAVEN (734-2836) or email us at info@safehavenboatlifts.com.

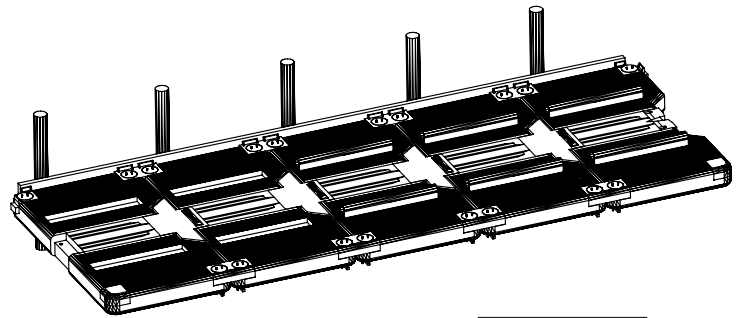
HARBOR 3 ATTACHMENTS

TIMBER MOUNT Attachment for Fixed Docks



FRONT TIMBER MOUNT

REQUIRED PARTS:
2 Timber Corners



SIDE TIMBER MOUNT

REQUIRED PARTS:
1 Timber Corner
4 Timber Connector Links

GUIDELINES:

Special Note for Side Mount: Each platform will have a timber mount from the timber corner extending to half of the 1st connector link, then from the other half of the 1st connector link to half of the 2nd connector link. There should be a small gap between each timber to allow the platform to move with the water. Secure with 1/2" HGD though bolts (not included) and do not use rear attachment points.

Timber Mount Attachment for Front & Side Mount:

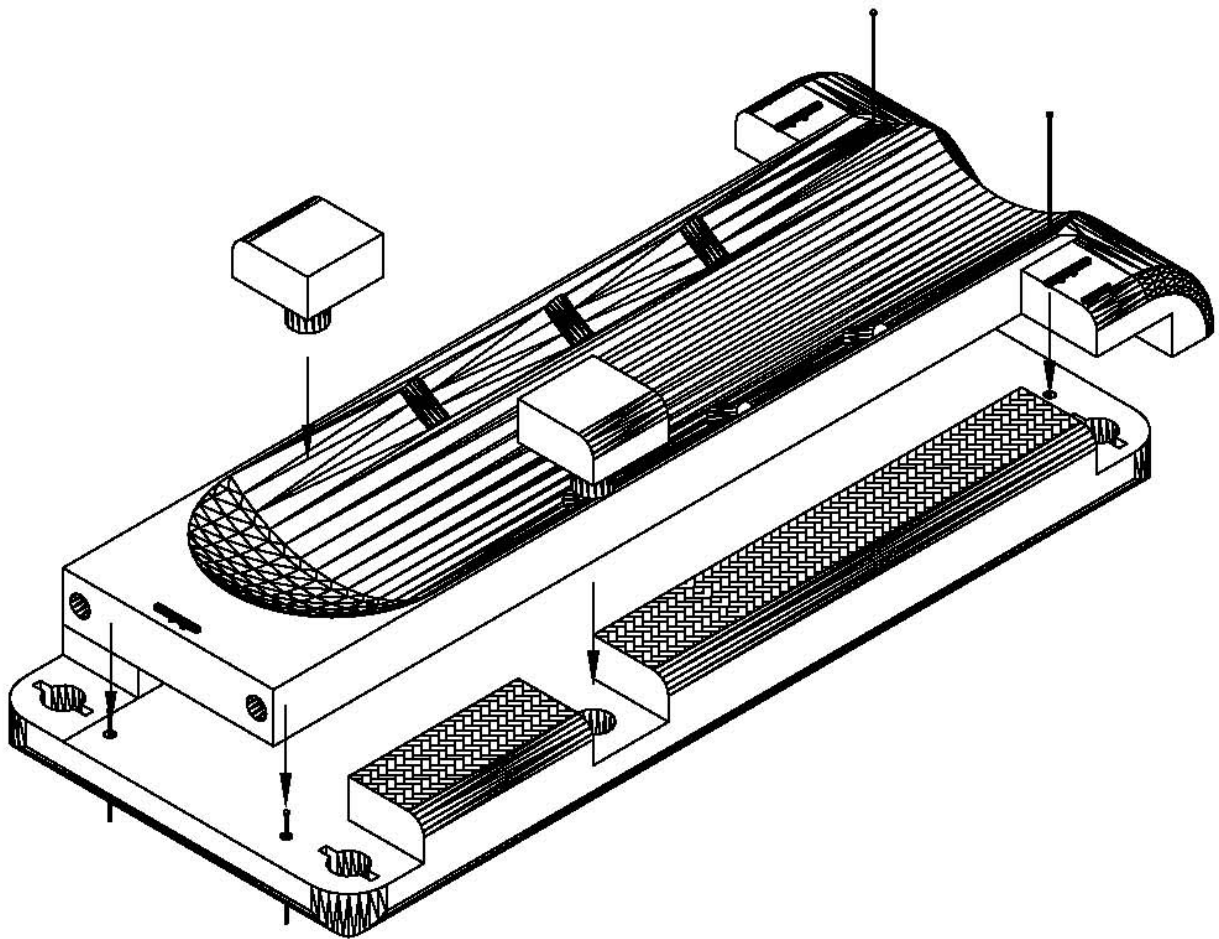
- Use 3" wide treated timbers or larger.
- Secure with 1/2" through bolts. (Hardware not included.)
- Timber should not extend more than 3" from edge of platform.
- Mount U-bolts along timber to connect to existing piles.

If you have any questions regarding installation please contact us via email or phone for assistance.
Call 1-877-SFHAVEN (734-2836) or email us at info@safehavenboatlifts.com.

HIDEAWAY ASSEMBLY

ATTACHMENT OPTIONS

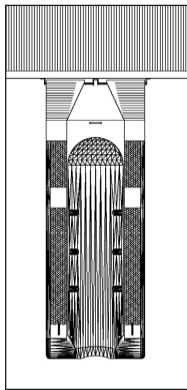
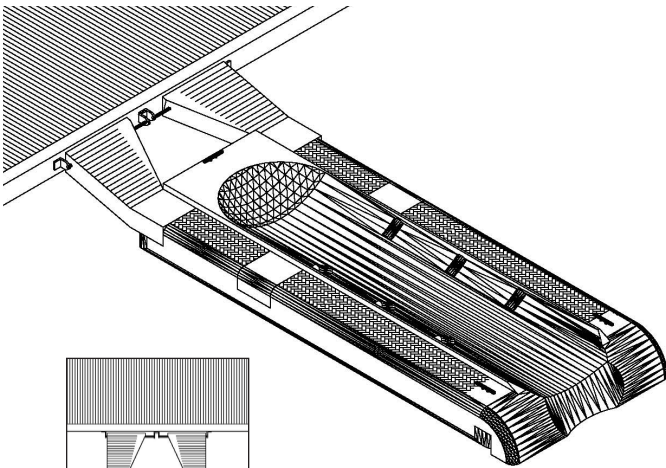
- **Pile Attachment:** Front Mount ONLY
- **Floating Dock:** Side Mount & Front Mount
- **Timber Mount:** Front Mount ONLY
- **Hideaway Attachment:** Side & Front Mount



If you have any questions regarding installation please contact us via email or phone for assistance.
Call 1-877-SFHAVEN (734-2836) or email us at info@safehavenboatlifts.com.

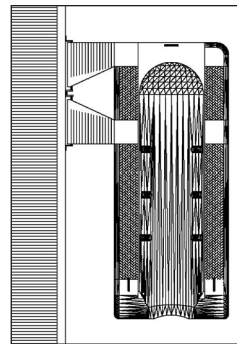
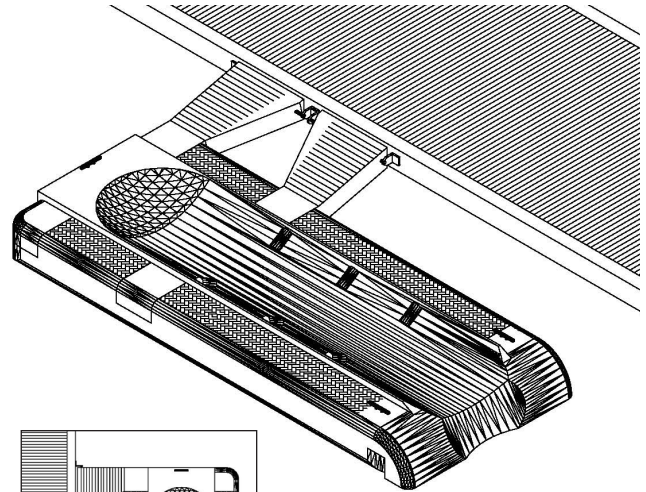
HIDEAWAY ATTACHMENTS

FLOATING DOCK MOUNT



FRONT FLOATING POSITION

REQUIRED PARTS:
Floating Dock Attachment Kit
or Hideaway Attachment



SIDE FLOATING POSITION

REQUIRED PARTS:
Floating Dock Attachment Kit or
Hideaway Attachment

GUIDELINES:

Floating Dock Attachment Kit for Front and Side Mount:

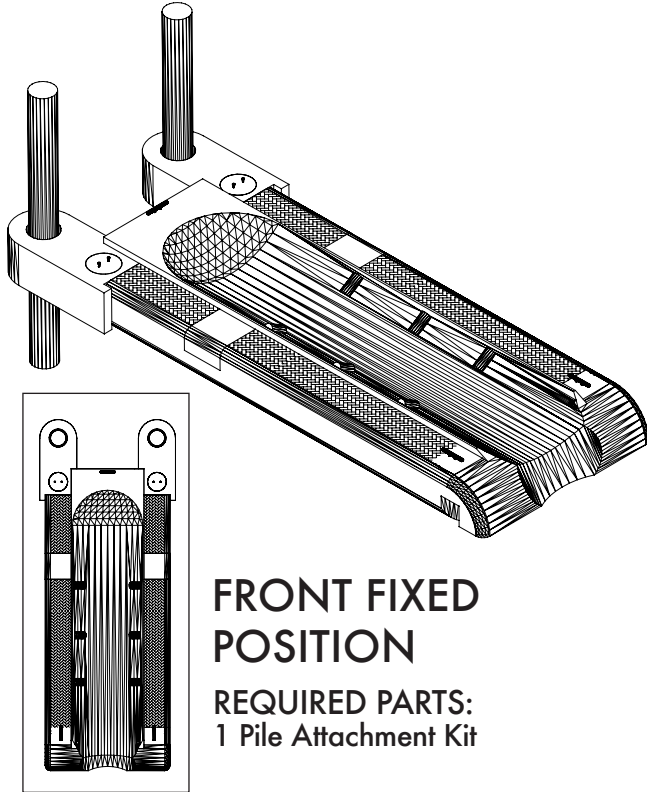
- Mount HDG brackets 12" above water to allow for maximum stroke.
- Attach with 1/2" lags or through bolts.
- Secure with PVC pipes and plastic ties.
- Do not use rear attachment points.

If you have any questions regarding installation please contact us via email or phone for assistance.
Call 1-877-SFHAVEN (734-2836) or email us at info@safehavenboatlifts.com.

HIDEAWAY ATTACHMENTS

PILE ATTACHMENT

- FRONT MOUNT ONLY -

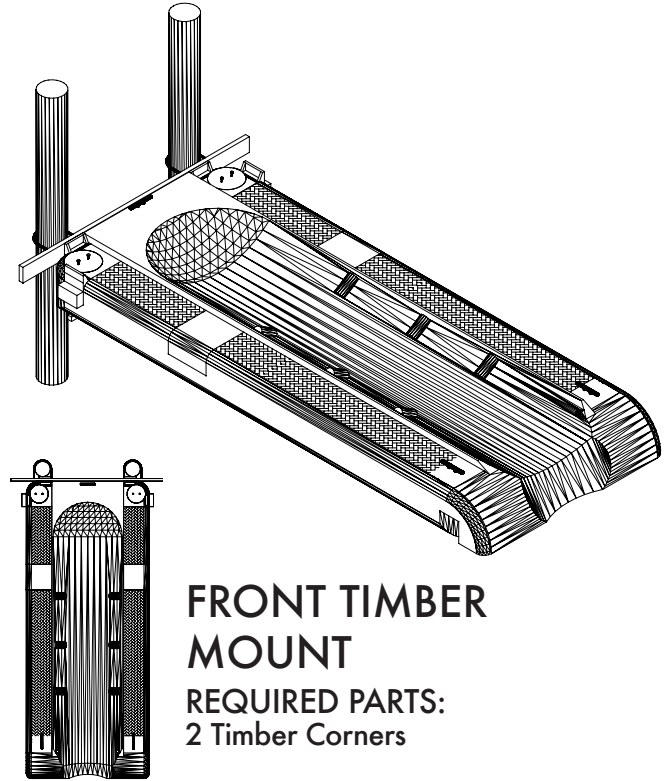


FRONT FIXED POSITION

REQUIRED PARTS:
1 Pile Attachment Kit

TIMBER MOUNT

- FRONT MOUNT ONLY -



FRONT TIMBER MOUNT

REQUIRED PARTS:
2 Timber Corners

GUIDELINES:

Pile Attachment Kit for Front Mount:

- 12" inside dimension.
- Piles should not be larger than a 10" diameter.
- Pile centers must be exact.
- Attachments must go over the top of piles.

GUIDELINES:

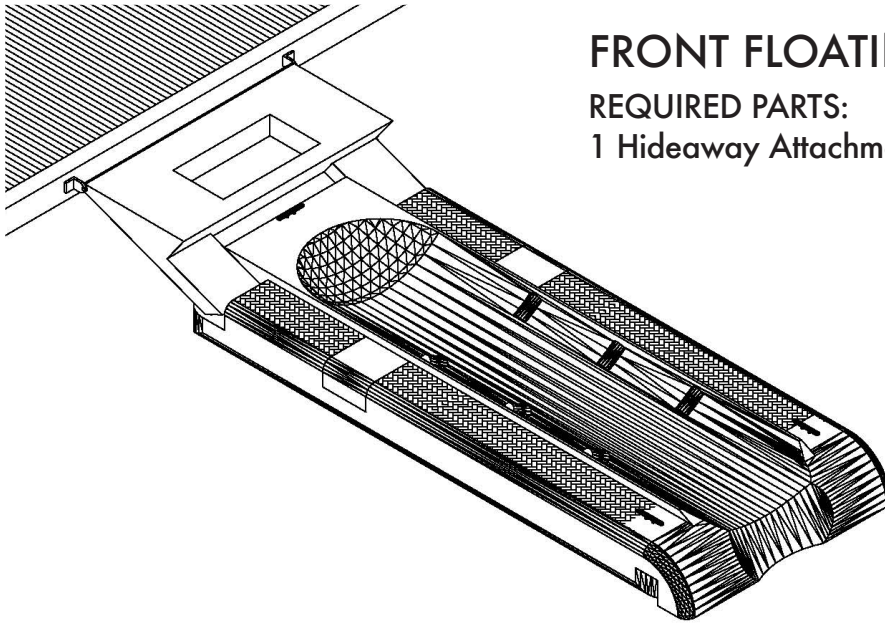
Timber Mount Attachment for Front Mount:

- Use 3" wide treated timbers or larger.
- Secure with 1/2" through bolts. (Hardware not included.)
- Timber should not extend more than 3" from edge of platform.
- Mount U-bolts along timber to connect to existing piles.

If you have any questions regarding installation please contact us via email or phone for assistance.
Call 1-877-SFHAVEN (734-2836) or email us at info@safehavenboatlifts.com.

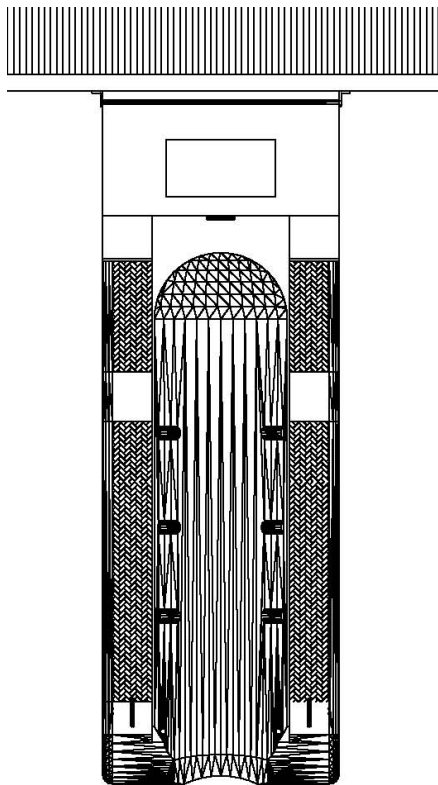
HIDEAWAY STORAGE ATTACHMENT

FLOATING DOCK MOUNT



FRONT FLOATING POSITION

REQUIRED PARTS:
1 Hideaway Attachment Kit



FRONT FLOATING POSITION (TOP VIEW)

WINCH KIT ASSEMBLY

WINCH KIT INCLUDES:

- 2- Straps
- 1- Ring
- 2-Shackles
- 1-Pulley
- Winch & Base
- Rope not included

ASSEMBLY:

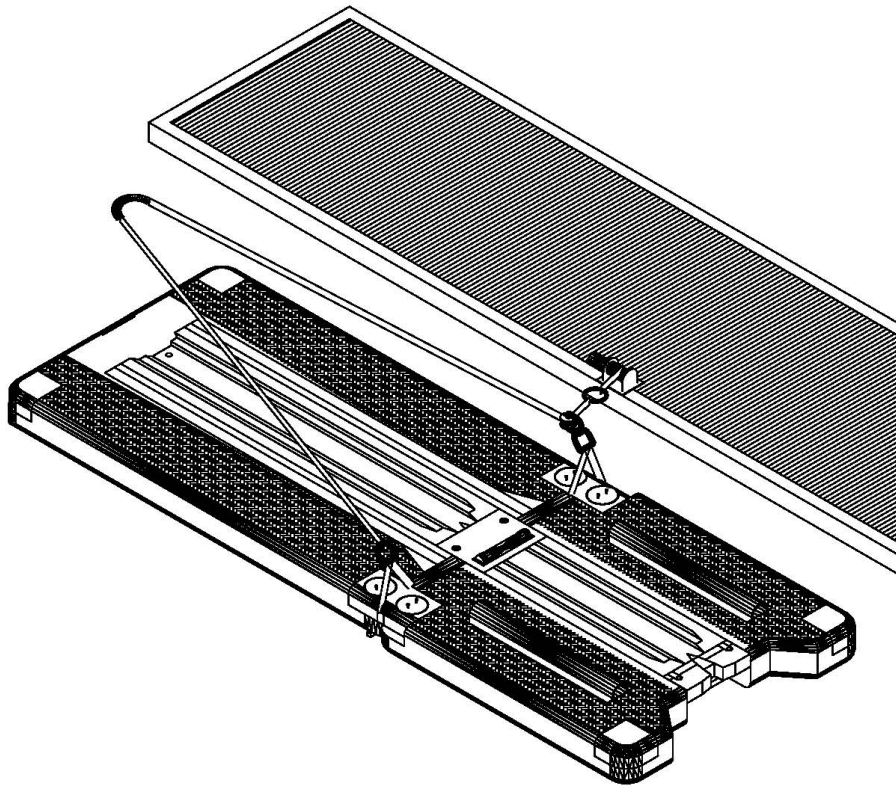
- Straps go under the connector links between structure plugs on platform.
- Connect loose ends of rope with shackles.
- Tie rope (not included) to shackle.
- Attach pulley to opposite shackle.
- Thread the rope through the pulley and tie ring to end of rope.
- Ring connects to strap on winch.

WINCH:

- Secure winch base to dock.
(Hardware Not Included)
- Mount base plate away from Pulley.
- Point winch head toward pulley.
 - Drill 1/4" hole through base and install 1/4"x 5" SS bolt to fix position of winch.

OPERATION:

- Place rope over bow eye of the boat, not through the bow eye.
- Connect hook on winch strap to ring.
- Tighten rope with winch until stern of boat is in the water.
- Power boat off of boatlift.
- Repeat process if necessary.



If you have any questions regarding installation please contact us via email or phone for assistance.
Call 1-877-SFHAVEN (734-2836) or email us at info@safehavenboatlifts.com.

COMPONENT PARTS AND DESCRIPTIONS



Air Tank:

Mounts under platform and adjust buoyancy by filling with air or water.



Bow Guide:

Guides Bow of boat onto the boatlift.



Bunk Fills:

Used for safety to level the surface of the platform by filling empty bunk slots.



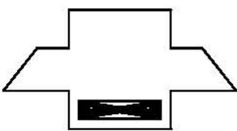
Connector Link:

Connects all Retreat 2 and Harbor platforms together in conjunction with structure plugs.



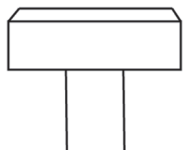
Corner Piece:

Levels surface of platform by filling corner attachment points.



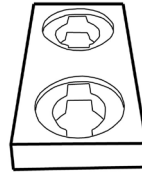
Harbor Center Roller:

Fills gap between 6'x11' platforms and contain a keel roller to assist docking and launching.



Hideaway Decorative Plug

Levels platform surface by filling unused attachment points for safety.



Hideaway Side Connector:

Connect two or more hideaways side by side with structure plugs.



Jet-T Plug:

Used for safety to level surface of platform by filling unused attachment points.



Pipe Bunk:

Mounts on top of platform and supports the boat hull when docked. (see pg. 33 for installation and placement instructions.)



Retreat 2 Center Roller:

Fills gap between Retreat and 7.5' x 8' platform and contains keel roller to assist docking and launching.



Structure Plug:

Used in conjunction with the Connector Link to attach Harbor and Retreat 2 platforms together.

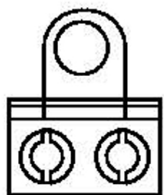


Solar Hybrid Pump:

Power source for the solar hybrid boatlift. (see pg. 32 for installation and placement instructions.)

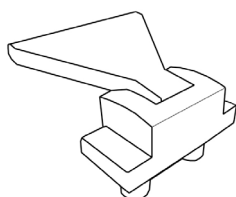
If you have any questions regarding installation please contact us via email or phone for assistance.
Call 1-877-SFHAVEN (734-2836) or email us at info@safehavenboatlifts.com.

ATTACHMENT COMPONENT AND DESCRIPTIONS



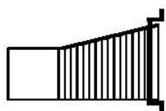
Adjustable Pile Side Attachment:

Designed specifically for side mounting.
Works best when driving new piles.



Harbor Double Attachment:

Connects the Harbor platforms together
and side mounts to a floating dock.



Floating Dock Attachment Arm:

Labeled "A" & "B" together they make
a floating dock attachment kit or can be
used individually with Retreat2 or Har-
bor side attachments for side mounting.



HDG Attachment Kit:

Galvanized 90 degree pipe with
plastic sleeve and mounting plate.
(Jet -T only)



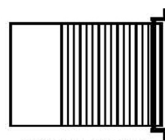
PVC Attachment Kit:

The kit contains two Sch. 80 Flanges
and 90 degree elbows. Four inch PVC
pipe must be supplied by the installers
for custom fit. (Jet-T only)



Pile Mount Attachments:

Consist of two arms labeled
"A" & "B". Can only mount to the
corner attachment points. Works
best when driving new piles.



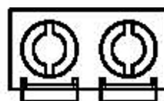
Retreat 2 Double Attachment:

Connects the Retreat 2 platforms
together and side mounts to a
floating dock



Timber Corner Attachment:

Mounts to the corner attachment
points and accepts 3" x 8"
treated pine lumber for front
mounting to existing piles, or
individually with the timber link
for side mounting



Timber Link Attachment:

Connects platforms together with
structure plugs and accepts 3" x 8"
treated pine lumber for side mounting
to existing piles, in conjunction with
timber corner attachments.

If you have any questions regarding installation please contact us via email or phone for assistance.
Call 1-877-SFHAVEN (734-2836) or email us at info@safehavenboatlifts.com.

SOLAR HYBRID PUMP INSTALLATION

Placement of the Solar Hybrid Pump Box:

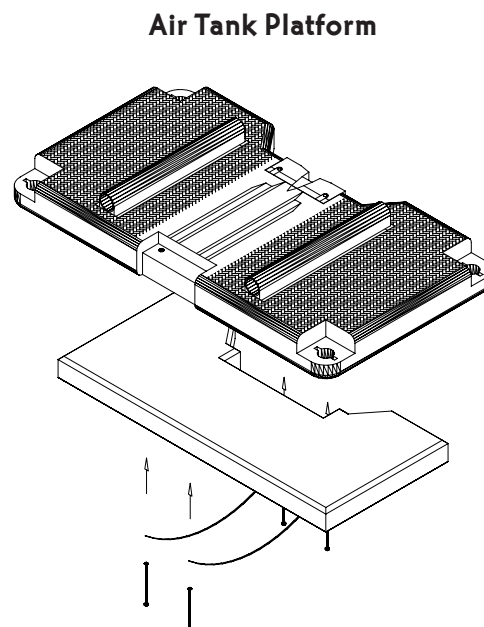
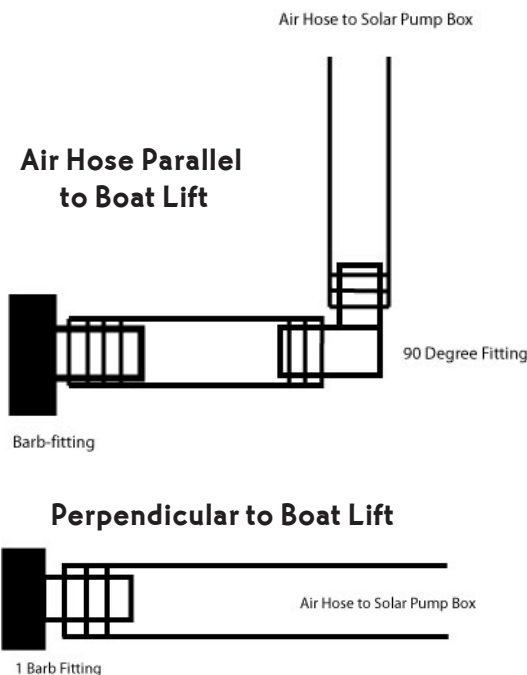
- Determine the location for the Solar Hybrid pump box and secure to dock with lags or screws provided. Place the pump in a location that receives as much sunlight as possible.
- Place a 12 volt marine grade battery (not included) inside the pump box. Put the lugs for the pump and the solar panel over the terminals and tighten wing nuts.
- Flip switch to verify the pump is working.
- Put the solar panel lid on the box and secure with provided screws.

Connecting the Solar Hybrid Pump to the Air Tank:

- The Air Tank has a hose fitting on both sides. One threaded cap and one barb fitting.
- The air hose needs to be at water level during operation. Do not run air hose under air tank. Change hose fittings so they are on

the side closest to the solar hybrid pump box. You may need to secure the air hose so it does not sink too deep under the water.

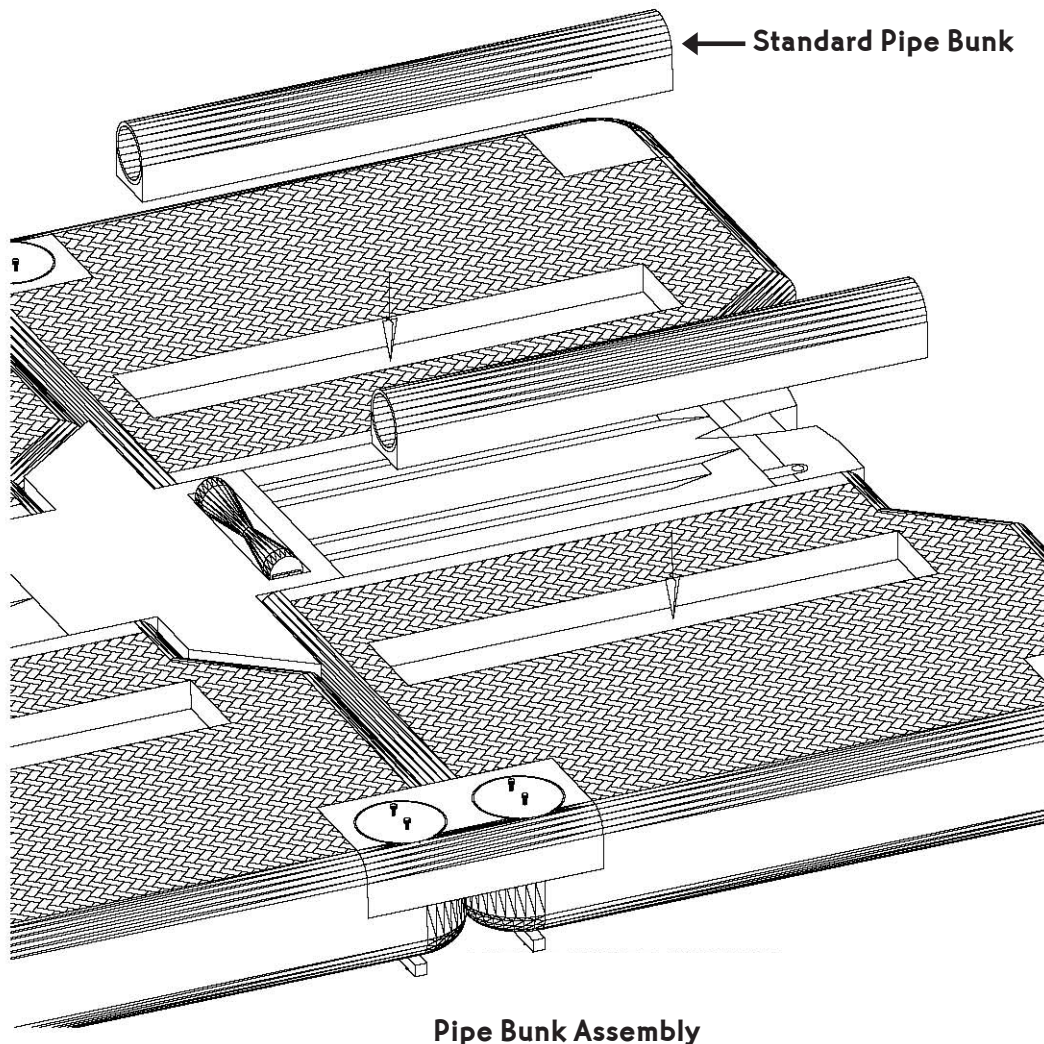
- Be sure the fittings have Teflon tape. Tighten air fittings.
- If the air hose will run parallel with the platform, install the 9" hose with 90 degree barb onto the fitting on the side of the air tank, then connect the 22' air hose to the barb fitting and secure with plastic hose clamp. Cut air hose at the correct length and attach to the barb fitting on the pump box. Secure with plastic air hose.
- If the air hose runs perpendicular, connect the 22' air hose directly to the barb fitting on the air tank, then connect the 22' air hose to the barb fitting. Secure with plastic hose clamp. Cut air hose at the correct length and attach to the barb fitting on the pump box. Secure with plastic air hose.
- Follow the diagram on the box for operations.



If you have any questions regarding installation please contact us via email or phone for assistance.
Call 1-877-SFHAVEN (734-2836) or email us at info@safehavenboatlifts.com.

STANDARD PIPE BUNK INSTALLATION

- Place Pipe Bunk in slot on the 7.5' x 8' or 6' x 11' platform.
- Tap on end of pipe so that the notch on the base of the pipe is under the lip of the slot on the platform.
- With a mallet, tap the back side of the pipe bunk until back bunk slides into the slot on the platform.
- You may need to stand on bunk to press it down into the slot. If so be very careful not to fall.



If you have any questions regarding installation please contact us via email or phone for assistance.
Call 1-877-SFHAVEN (734-2836) or email us at info@safehavenboatlifts.com.

MAINTENANCE

There is very little maintenance required for the Safe Haven System. Review the list below for periodical checks.

- ☐ Check all bolts or lags securing the attachments.
- ☐ Check bolts to structure plugs.
- ☐ Be sure air hose is in good working order. Look for bends impeding air flow.
- ☐ Follow Factory Specification for maintaining a 12-volt marine grade battery.
- ☐ Verify that the solar panel is receiving adequate sunlight in all seasons of the year.
- ☐ Clean Solar Panel with mild soap and water using a soft sponge.
Do not use harsh cleaners or solvents.
- ☐ Make sure Pipe Bunks and Keel Roller are free from debris.
- ☐ Keep Bow Guide free of marine growth of any kind.

TROUBLESHOOTING

- **If you are having a problem backing your boat off the platform:** There are several petroleum based lubricants made to reduce friction between boat hulls and trailers. Apply to pipe bunks and center of the platform where the keel rides. Be sure to watch your step when walking on boatlift as lubricant can make the surface slippery.
- **If petroleum based products are not working:** Look at the pipe bunks on your boatlift in relation to the keel of your boat. If the keel of your boat is not touching the platform the pipe bunks may be too large. Call us to order bunk replacements.
- **If your boat is not heavy enough to sink the rear platform in the water while backing off:** Remove the two decorative corner mounts and fill with concrete. This will provide additional weight to assist you when launching. If needed you can also fill the bunks, connector, and center roller as well.
- **If you need to remove your Safe Haven Boatlift from the water you may notice additional water inside the platform:** This water accumulates between the plastic shell and the polystyrene foam. Each platform has a drain plug near the yellow bow guide. Tilt platform on edge and remove plug to drain.
- **If the air supply line needs to remain at water surface level:** If the line sinks under the water the pressure may be too great to allow air flow. Never run the air supply line under the boatlift. There are air fittings on two sides of air tank to prevent this problem.

If you have any questions regarding installation please contact us via email or phone for assistance.
Call 1-877-SFHAVEN (734-2836) or email us at info@safehavenboatlifts.com.

WARRANTY

Carolina Waterworks Inc. warrants to the original retail consumer that all Safe Haven System Lifts will be free of defects from workmanship and materials. This warranty is for a period of eight years, starting with the original purchase date, and is in lieu of any implied warranties of merchantability and strength.

This Warranty DOES NOT Cover

- Air Lines and Fittings
- Damage to platform due to, but not limited to, hull obstructions, modifications, or sharp edges making contact with the platform.
- Winches or related parts for the winch systems.
- In addition, this warranty does not cover installation, commercial use, damage while in transit, or damage resulting from alterations, abuse or misuse, storm or other acts of god, unauthorized repair or modification of the product, or failure to follow owner's manual.

In the event a product is found to be defective in workmanship or material, you may obtain warranty service by returning the defective part , freight prepaid to:

Carolina Waterworks, Inc. 211 Eagle Road, Goose Creek, SC 29445 • 1-877-SF-HAVEN (734-2836)
--

Be sure to include your name, address and phone number, proof of purchase and description of the operating problem. If Carolina Waterworks, Inc. deems the part is defective, we will ship a repaired or replacement part to you at no cost. Shipping and handling charges are the responsibility of the customer and must be pre-paid prior to return.

Limitations

Implied warranties, including those of fitness for a particular purpose and merchantability (an unwritten warranty that the product is fit for ordinary use), limited to one year from date of purchase. Carolina Waterworks, Inc. will not pay for loss of time; inconvenience; loss use of your Safe Haven System; product or property damage caused by your Safe Haven System product or it's failure to work; incidental or consequential damages; or any damages resulting from modification or misuse of your Safe Haven product.

This warranty gives you specific legal rights, and you may also have other rights that vary from state to state. Some states do not allow limitations on how long an implied warranty lasts or the exclusion of incidental or consequential damages, so the above exclusions may not apply to you.

If you have any questions regarding installation please contact us via email or phone for assistance.
Call 1-877-SFHAVEN (734-2836) or email us at info@safehavenboatlifts.com.



© 2009 Carolina Waterworks, Inc.
www.safehavenboatlifts.com